

IsiXhosa uLwimi Lwasekhaya

Incwadi yemisebenzi
yasekhaya

IBANGA

2

Week
1-5



9 781990 910333



Incwadi yoku- 1

Igama: _____

IsiXhosa uLwimi Lwasekhaya

Incwadi yemisebenzi
yasekhaya



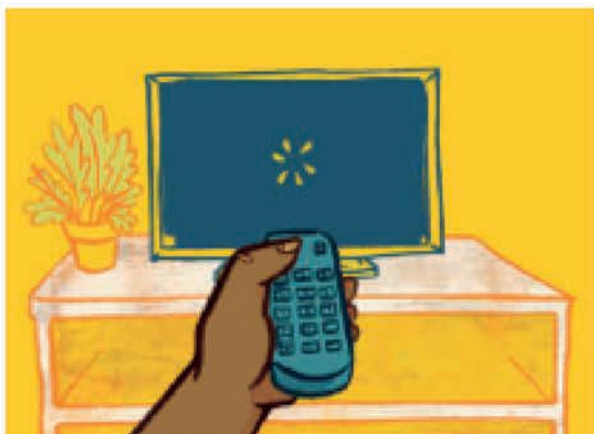
Molweni bazali nabantwana

Molweni bazali nabantwana, le yincwadana yomntwana yemisebenzi yesikolo. Le misebenzi ilungiselelwe ukuba umntwana wakho ayenze ekhaya ngoncedo lwakho okanye nabanina onakho ukumnceda.

Le misebenzi iza kumncedisa umntwana ekuzikisiseni ukucinga nokuthetha ngezimvo zakhe. Uya kuthi kananjalo afunde oonobumba nezandi ngokwebanga lakhe. Ngamxhel umnye, uya kufumana ithuba lokuziqhelanisa nokubhala. Okokugqibela; le ncwadana iya kuthi imxhase ekufundeni nasekuqondeni amabali akwincwadi yakhe yeVula Bula.

Ze nilonwabele eli thuba lokufunda nabantwana emakhaya. Enkosi

Ezi ziingcebiso onokuzisebenzisa ukuncedisana nomntwana ekhaya.



Qinisekisa ukuba akukho ziphazamiso.



Ziphe ithuba uhlale nomntwana uncede xa kufuneka.



Umntwana makathathe ikhefu phakathi kwemisebenzi



Bonakalisa umdla kwibali alifundayo, ubuze imibuzo.

Umsebenzi	Ixesha	Indima Yomzali
 <p>Ukuphulaphula nokuthetha</p>		<p>Nceda ekuyileni ingxoxo ngomxholo onikiweyo. Xoxani ngeempendulo zemibuzo. Khuthaza umntwana athethe ngezimvo zakhe.</p>
 <p>Izandi nokubhala ngesandla</p>		<p>Qinisekisa ukuba umntwana usibiza ngendlela efanelekileyo isandi. Jonga ze uncome umsebenzi wokubhala ngesandla</p>
 <p>Ukufunda</p>		<p>Kumntwana onokufunda okusakhulayo, mncede ngokumana umfundela apho axakwa khona ze aphinde azifundele. Bonakalisa umdla kwibali ze nixoxe ngemibuzo nokunye okufundiweyo. LONWABELENI ELI XESHA!</p>

QAPHELA

Mzali, nceda utyikitye kumgca wokutyikitya osezantsi kwiphepha elinomsebenzi.

Iveki yoku- 1

Usuku loku- 1

Umhla: _____

Ukuphulaphula nokuthetha



20 min

Jonga lomfanekiso ze uphendule imibuzo engezantsi.

29

Sitya ukutya okufanelekileyo

Ikota yoku-1 - Iveki 8



1. Yintoni le uyibonayo kulomfanekiso?
2. Kubaluleke ngantoni ukulima?
3. Ingaba ukulima kuyayilondoloza imali? Njani?
4. Ikhona igadi kokwenu?
5. Loluphi udidi lwegadi yakho? Yeyemifuno, iziqhamo okanye iintyatyambo?

Ukufunda izandi



20 min

Ngoku sizakufunda ngesandi u-dl. Zama ukusibiza.

Funda lamagama angezantsi ze ubhale awakho amagama anesandi u dl kwizikhewu ezingezantsi.



edlelweni

dlula

idlavu

isidlo

isidlele

Sindawoni isandi u-dl kulagama?

Umzekelo:

igama	ekuqaleni	embindini	ekugqibeleni
dlala		dl	
isidlo			
idlavu			
dlula			

Ukubhala ngesandla



20 min

Gcwalisa lemigca ngokukhuphela isandi namagama onke angentla. Qala ngokudibanisa amachokoza e patheni ze ugcalise umgca.

dl dl dl

dlula isidlo idlavu

////

Ukufunda ibali



20 min

Kwincwadi yakho yamabali, jonga ibali "Umnqathe omkhulukazi". Jonga umfanekiso kwiphepha 101 uze uphendule lemibuzo ilandelayo.

Qikelela:

1. Ucinga ukuba lingantoni ibali?
2. Ibizwa ngokuba yintoni le ndawo ame kuyo utata?
3. Inokuba ucinga ntoni lo tata?
4. Kwenzeke ntoni bethu?

Funda ibali, umane uqaphela ukuba uyaliqonda na.



Ukuphulaphula nokuthetha



20 min

29

Sitya ukutya okufanelekileyo

Ikota yoku-1 – Iveki 8



1. Khawuphe lomfanekiso esakho isihloko, usibhale kulomgca ungentla.
2. Zeziphi izixhobo esizisebenzisayo xa silima?
3. Yintoni ethi incede ekukhuliseni izityalo?
4. Chaza imifuno oyaziyo?

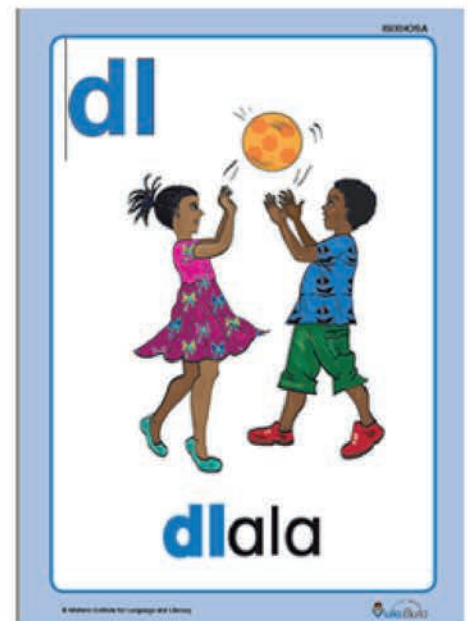
Ukufunda izandi



20 min

Biyela igama elifanelekileyo kwisivakalisi ngasinye (dl).

1. Usana (ludlala, ludlula) ngonopopi walo.
2. Ndibone imoto (idlala, idlula) ngendlela.
3. Nditye (isidlo, isidlele) sam kusasa.



Ukubhala ngesandla

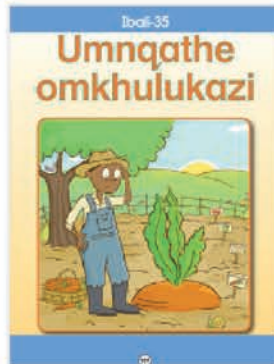


Kuphela ezizivakalisi kumgca ongezantsi.

1. Indlovu ifumene isidlo esidlamkisayo.

2. UDlangamandla unezidlele ezikhulu.

Ukufunda



Funda ibali kwakhona uze ufakele izigaba zebali ngezantsi

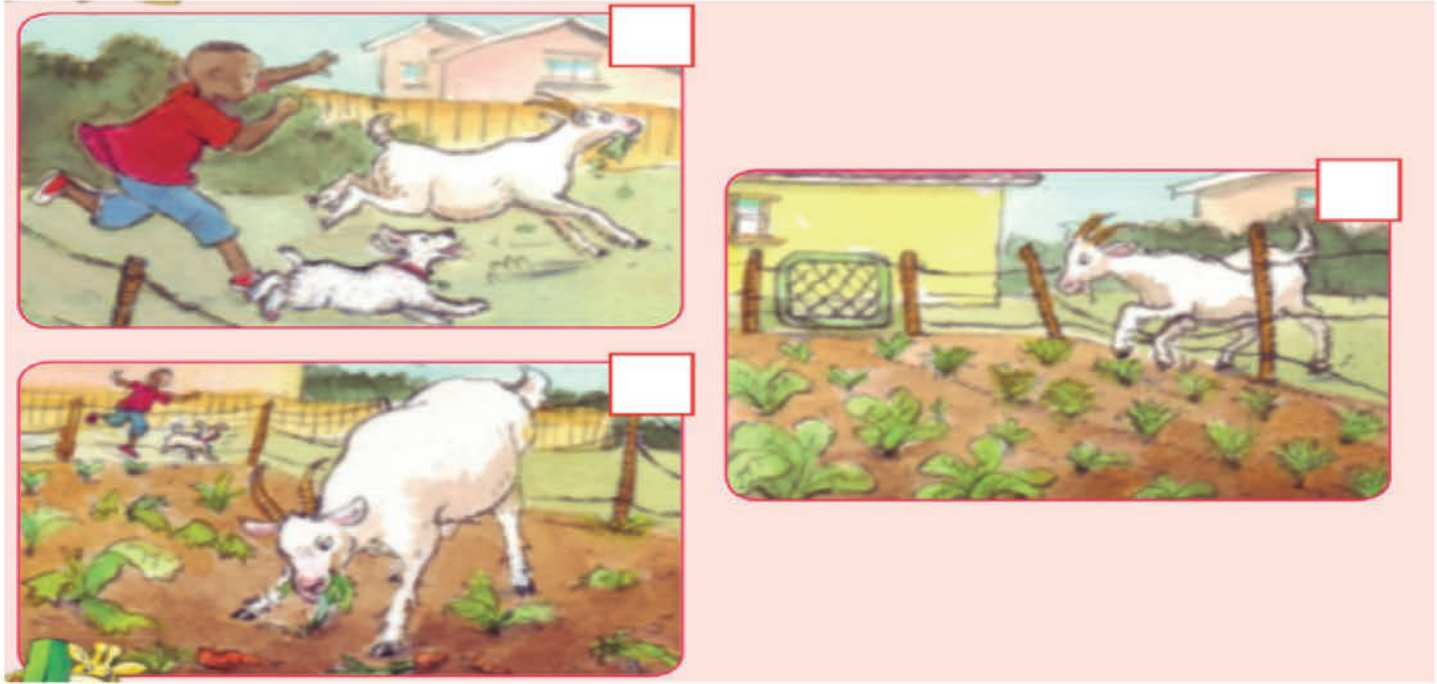
Isihloko:	
Abalinganiswa	Lenzekaphi ibali
Ingxaki	Isombululo
Imfundiso yebali	

Ukuphulaphula nokuthetha



20 min

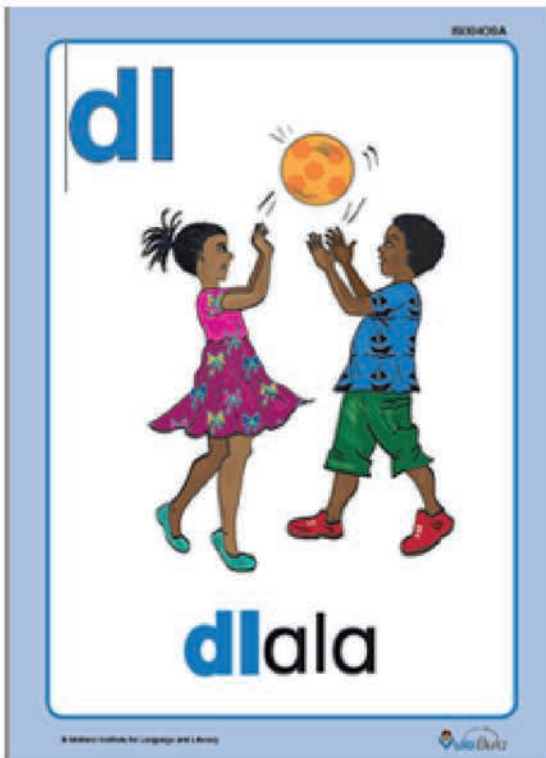
Jonga lomfanekiso ungezantsi uze ubalise ukuba kwenzeka ntoni apha. Wakugqiba ufake unani ngokulandelelana kokwenzekileyo.



Ukufunda izandi



20 min



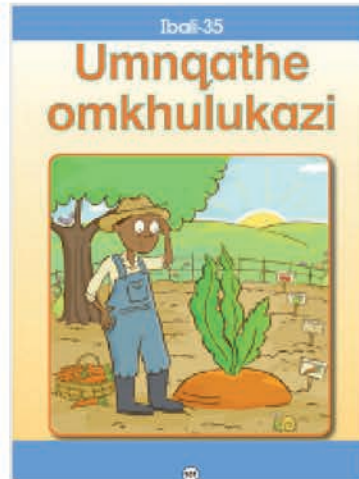
Hlenga-hlengisa lamalungu ubhale igama ngendlela efanelekileyo.

Umzekelo:

la	dla			dlala
si	i	le	dle	
i	ya	la	dlu	
so	i	dli		
dla	i	vu		



Ulifundile ibali, ngoku phendula imibuzo ekwiphepha 109.



UMSEBENZI
Sebenzisa amagama aseziqhokisini ukugqibezela izinto ezilandelayo.

A umngana	B unkosikazi	C umfama uNqaba
D ikati	E impuku	F ihogu
G umnqathe		

1. Wawumkhulu kakhulu _____.
2. _____ wabiza unkosikazi.
3. Unkosikazi kaNqaba wabiza _____.
4. _____ yabiza ikati.
5. Umfama uNqaba wabiza _____.
6. _____ yabiza impuku.
7. _____ yazincama kuba yayizithembile.

109

Iveki yesi- 2

Usuku loku- 1

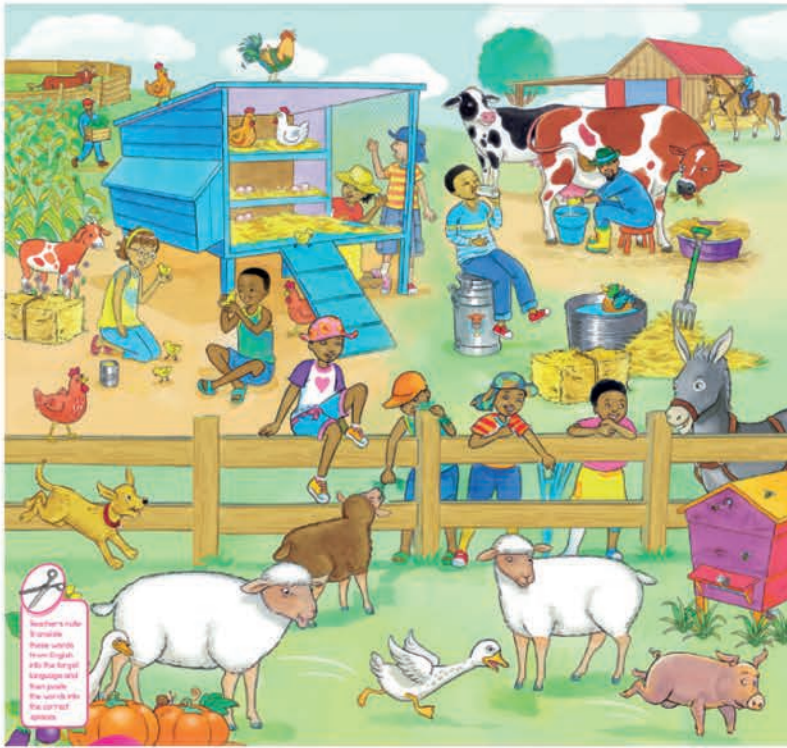
Umhla: _____

Ukuphulaphula nokuthetha







20 min

Jonga lomfanekiso ze uphendule imibuzo engezantsi.
Izilwanyana zasefama



	cow	
	horse	
	donkey	
	sheep	
	goat	
	pig	
	chicken	
	duck	
	goose	
	dog	

1. Biza zonke izilwanyana ezisemfanekisweni uze ulinganise indlela esikhala ngayo isilwanyana ngasinye.
2. Khawuchaze ukuba ubizwa ngokuba yintoni umntwana wesilwanyana ngasiye esilapha.
3. Bala isilwanyana ngasinye, ubeke inani lazo ecaleni kwaso.

isilwanyana	inani
	
	
	
	

Ubusazi? Ihashe liyakwazi ukulala limile.

Ukufunda izandi



20 min

Kuleveki sizakufunda ngesandi u-sh. Zama usibize.
Yakha isivakalisi ngalamagama angezantsi



ishumi

amashiya

shumayela

ihashe

Ukubhala ngesandla



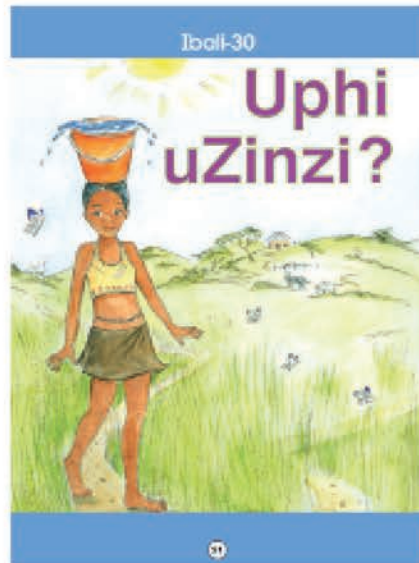
20 min

Gcwalisa lemigca ngokukhuphela isandi namagama.

sh sh sh

isishiqi qesha shiyeka

h/h



Thatha incwadi yakho yamabali, uze utyhile kwi phepha 51.

Uqikelelo: ukubalisa ibali ngokujonga iqweqwe lomfanekiso nesihloko sebali.

Phendula imibuzo

1. Ucinga ukuba iyaphi lentombazana ikulomfanekiso?

2. Inokuba lizakuba ngantoni eliballi?

3. Leliphi ixesha lemini?

4. Inokuba lenzeka phi elibali?

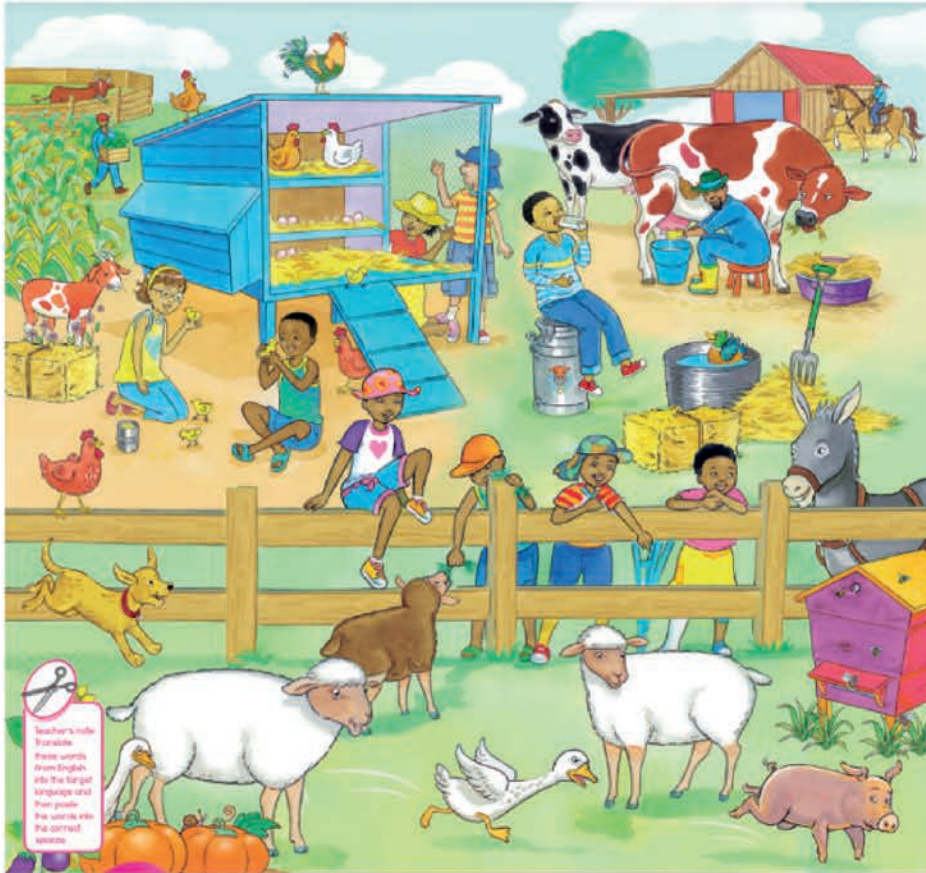
Ngoku ke ungalifunda ibali.

Ukuphulaphula nokuthetha



Jonga lomganekiso uphendule imibuzo engezantsi.

Izilwanyana zasefama



	cow	
	horse	
	donkey	
	sheep	
	goat	
	pig	
	chicken	
	duck	
	goose	
	dog	

1. Chaza ukuba isilwanyana ngasinye sitya ntoni kwaye silala phi.
2. Sichetywa ngeliphi ixesha lonyaka igusha? Kutheni?
3. Sifumana ntoni kwisilwanyana ngasinye?

Ubusazi? Imazi yegusha ukhupha 3-5kg yewulu ngonyaka.

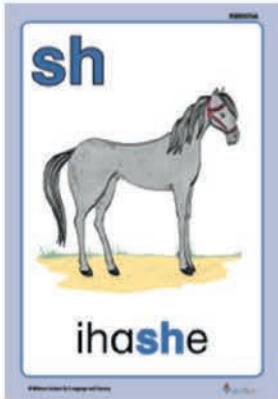
Ukufunda izandi







20 min

Fakela ezizandi zingezantsi kulamagama uze utshatise igama nomfanekiso walo.

shu, she, shi, sho, sha



i _ mi	
igu _ _	
i _ ti	
u _ ti	

Ukukubhala ngesandla



20 min

Kuphela ezizivakalisi kumgca ongezantsi.

1. Ihashe litya ingca.

2. Iigusha zasekhaya zininzi.



Funda kwakhona ibali lakho ze uphendule lemibuzo ilandelayo.

1. Leliphi ixesha enyakeni? Kutheni usitsho nje?

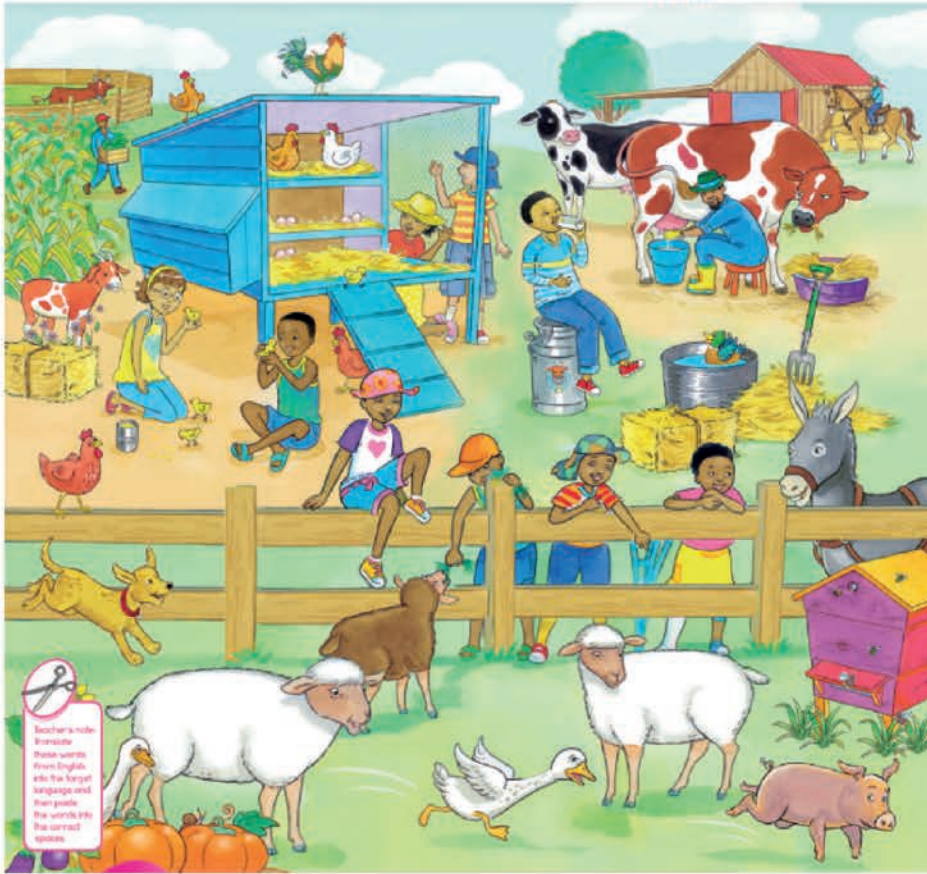
2. Kutheni ababasebenzi bebilile nje?

3. Ingaba uZinzi wayeyintombi enentlonipho ? Xhasa impendulo yakho.

4. Inokuba uZinzi wathatha ixesha elingakanani ukuyokukha amanzi? Kutheni usitsho?

5. Inokuba umbhali uzama ukusixelela ntoni ngeli bali?

Ukuphulaphula nokuthetha



	cow	
	horse	
	donkey	
	sheep	
	goat	
	pig	
	chicken	
	duck	
	goose	
	dog	

1. Khawuxelele umzali, ukuba kunokuthiwa wena usisilwanyana sasefama, ungakhetha ukuba sesiphi? Kutheni ukhethe sona?
2. Qweba ingoma yakho onokuyicula ukuba ungasesisilwanyana.
3. Bhala igama lesiXhosa ecaleni kweleSingesi kwizithuba ezisecaleni kwesilwanyana ngasinye.

Ubusazi? Ihagu sesona silwanyana sikrelekrele kwizilwanyana zasefama.

Ukufunda izandi



20 min

Khangela lamagama ano -sh kule phazili ingezantsi. Ulihlabe igama olifumeneyo.



i	h	a	s	h	e	i
s	h	i	y	e	k	a
i	s	s	e	t	i	m
s	a	h	e	g	t	a
h	b	u	f	a	j	s
i	s	k	b	y	y	h
q	e	s	h	a	m	i
i	m	m	s	h	a	y
i	s	a	r	h	a	a

Amagama ahlayo:

1. Isishiqi
2. amashiya
3. shiya

Amagama axwesayo:

1. ihashe
2. qesha
3. shiyeka



Ulifundile ibali, ngoku gqibezela kulemigca.
Ekuqaleni ebalini kwenzeka

Emva koko

Ekugqibeleni

Iveki yoku- 3
Usuku loku- 1

Umhla: _____

Ukuphulaphula nokuthetha



20 min

Jonga lomfanekiso wandule uuphendula imibuzo engezantsi.



5		lion	
6		elephant	
7		rhino	
8		buffalo	
9		leopard	
10		hippo	
11		zebra	
12		hyena	
13		buck	

Teacher's note:
To complete
these words
from English
into the target
language and
then paste
the words into
the correct
spaces.

1		monkey	
2		gorilla	

3		giraffe	
4		crocodile	

12		hyena	
13		buck	

6 Wild animals



basic education
Department
Basic Education
REPUBLIC OF SOUTH AFRICA



1. Biza zonke izilwanyana ozibonayo apha kulomfanekiso.
 2. Khawutsho, kuphi kulendawo zihleli kuyo ezizilwanyana?
 3. Inokuba yintoni ezingayifumaniyo apha ezinokuyifumana ehlathini? Inokuba yintoni eziyifumanayo apha ezingayifumaniyo ehlathini?
 4. Inokuba ziziva njani ngokuhlala apha endaweni yokuba sehlathini? Kuthe ni usitsho?
- Ubusazi? Indlovu iphefumla ngomboko wayo xa ingene nzulu emanzini.

Ukufunda izandi



20 min

Isandi esizakufunda ngaso kuleveki ngu -qw. Zama ukusibiza.



Funda lamagama alandelayo uze uchaze ukuba sindawoni isandi u-qw?

Umzekelo:

igama	ekuqaleni	embindini	ekugqibeleni
iqwarhashe		qw	
isiqwayi			
qwenga			
iqweqwe			
isiqwanaqwana			

Ukubhala ngesandla



20 min

Ww Ww Ww

Qq Qq Qq

qw qw qw

ww

1. Iqwarhashe libaleka ingonyama.

2. Indlovu iqwalasele inkawu esemthini.



Thatha incwadi yakho yamabali, ujonge kwiphepha 150, wandule uphendule lemibuzo ilandelayo.

1. Sesiphi ilwanyana osibonayo kwelibali?

2. Sidume ngantoni esisilwanyana?

3. Xa ujonge umfanekiso kwiphepha 152 inoba kuzakwenzeka ntoni?

4. Inoba lithini ufudo kumvundla kwiphepha 153?

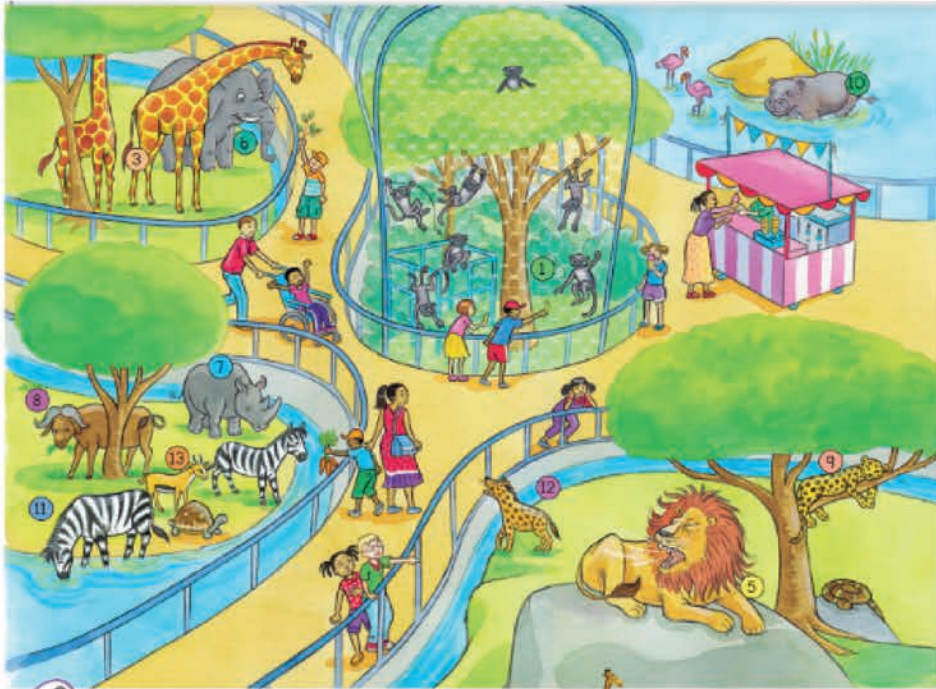
5. Xa ujonge kwiphepha 158, inokuba isiphelo sebali sizakubanjani?

Ngoku funda ibali.

Ukuphulaphula nokuthetha



20 min



- 5 lion
- 6 elephant
- 7 rhino
- 8 buffalo
- 9 leopard
- 10 hippo
- 11 zebra
- 12 hyena
- 13 buck

Teacher's note
Scissors icon
These words
from English
are the target
language and
must paste
the words into
the correct
boxes.

- 1 monkey
- 2 gorilla
- 3 giraffe
- 4 crocodile

POSTER 6 Wild animals



basic education
Department
Basic Education
REPUBLIC OF SOUTH AFRICA



1. Khawuphe lomfanekiso esakho isihloko, usibhale kulomgca ungentla.
2. Ukuba uyaqwalasela, uyakufumanisa ukuba iikampi zezilwanyana zohlukene apha, inokuba kutheni zingadityaniswa?
3. Inokuba kutheni kukho inethi kwelakhaya leenkawu?
4. Qwalasela elakhaya lemvubu, yintoni umehluko xa uyithelekisa namanye amakhaya ezizilwanyana?

busazi? Indlulamthi inezisu ezine.

Ukufunda izandi



20 min

Tshatisa izandi ezizalanayo kuletafile ingezantsi.



iqwarhashe	ibhokhwe
amashiya	qwalasela
dlala	qweba
qwela	Idlavu
ibhasi	shumayela

Ukukubhala ngesandla

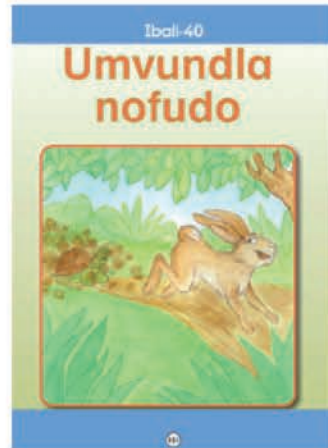


20 min

Kuphela ezizivakalisi kumgca ongezantsi.

1. Iqwarhashe libaleka ingonyama.

2. Indlovu iqwalasele inkawu esemthini.



Umfanekiso-ngqondweni: kukubanombono wakho ngokwemeko iqhubeka ebalini.

Ulifundile ibali lakho, ngoku ndifuna ucingisise ubenomfanekiso-ngqondweni ukuze uphendule lemibuzo ilandelayo.

Khawube nomfanekiso ngqondweni

1. Inokuba wayenjani ukudinwa ufudo? Umvundla yena?

2. Umvundla inokuba wayeziva njani ngokungaphumeleli?

3. Imozulu inokuba yayinjani ngale mini? Kutheni usitsho?

4. Eli bali ungalifanisa neliphi ibali owakhe walifunda

Zoba isilwanyana esisebalini kulebhokisi

Ukuphulaphula nokuthetha



20 min



5		lion	
6		elephant	
7		rhino	
8		buffalo	
9		leopard	
10		hippo	
11		zebra	
12		hyena	
13		buck	

Teacher's note: Scissors: These words are from English and have been written into the correct spaces.

1		monkey	
2		gorilla	
3		giraffe	
4		crocodile	

POSTER **6 Wild animals**

basic education
Department of Basic Education
REPUBLIC OF SOUTH AFRICA

ISBN 978-1-4315-2751-9

1. Inokuba zikufumana phi ukutya ezizilwanyana?
2. Khawujongisise kwakhona, inokuba zeziphi ezinobungozi ebantwini?
3. Zeziphi izilwanyana owakhe wazibona kwimali yaseMzantsi Afrika. Wawuzibona kwimalini?

Ngoku ke khawundibhalele izivakalisi ngalomfaneki wezizilwanyana.

Ukufunda izandi



20 min



Ibhanki yamagama: Fakela igama elifanelekileyo kula angezantsi.

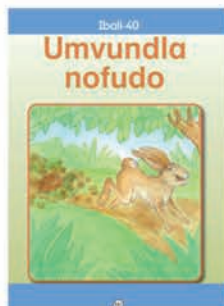
uyaqwebisa, isiqwengana, isiqwayi, eqweqweni

1. Umama ubhala _____ lencwadi.
2. Ndibone ebethainja nge _____ senduku.
3. Wayisika ilokhwe yada yaba _____ selaphu.
4. Uyathanda uku _____ kodwa uligwala.

Ukufunda



30 min



Funda ibali kwakhona ze uphendule imibuzo.

1. Zeziphi izilwanyana ezilapha ebalini?

2. Ngubani owafika kuqala entanjeni?

3. Sithini isifundo esafundwa ngumvundla?

4. Ingaba elibali liyinyani?

Iveki yesi- 4
Usuku loku- 1

Umhla: _____

Ukuphulaphula nokuthetha



Jongisisa lemifanekiso uze uphendule imibuzo engezantsi.

1 sun
2 rain
3 cloud
4 thunder
5 umbrella
6 wind
7 kite
8 snow
9 coat

POSTER 3 Weather

Rainbow WORKBOOKS Grade 2 SA1

basic education
Department of Basic Education
REPUBLIC OF SOUTH AFRICA

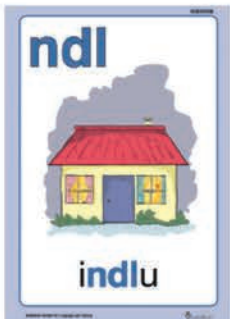
ISBN 978-1-4315-2753-3
THIS POSTER MAY NOT BE SOLD.

1. Chaza imo yezulu kumfanekiso ngamnye. Ngeyiphi wena oyithanda kakhulu? Kuba kutheni?
2. Ibizwa ngokuba yintoni le iwa kumfanekiso wesithathu nowesine?
3. Khawuqwalasele lemifanekiso kwakhona. Ngoku balisa ukuba kwenzeka ntoni kumfanekiso ngamnye. Baziva njani abantwana?
4. Khawucinge ngamhla wena wayokuqubha. Khawubalisele umzali ngaloomini. Wawuziva njani?
5. Uyawazi amaxesha onyaka? Mangaphi?

Ukufunda



Isandi esizakufunda ngaso kuleveki ngu -ndl. Zama ukusibiza. Ngoku fundisisa lamagama am uze nawe ucinge awakho.



- indlala
- ukwindla
- iindlathi

Ngoku bhala awakho amagama amane (4) anesandi u-ndll uze ubhale isivakalisi ngegama ngalinye.

Umzekelo:

Indlu - Indlu kasisi inombala obomvu.

Ukubhala ngesandla



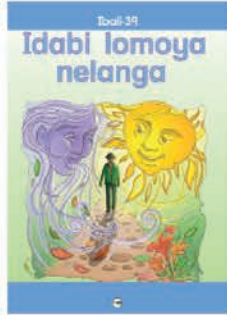
Ngoku thatha epensile yakho ulungiselele ukubhala kakuhle. Gcwalisa lemigca ngokukhuphela ezizandi nepateni. Khumbula, ungayiphakamisi ipensile yakho xa usenze ipateni de uyigqibe.

Nn Nn Nn

Dd Dd Dd

Ll Ll Ll

vvvvvv



Thatha incwadi yakho yamabali, ujonge kwiphepha 140 ibali "Idabi lomoya nelanga", wandule uphendule lemibuzo ilandelayo.

1. Xa ujonge umfanekiso wokuqala inokuba kwenzeka ntoni apha ebalini?

2. Ingaba le ndoda iziva njani ngokwenzekayo?

3. Ingayinceda njani le ndoda kule meko?

4. Wakhe wakule meko ngenye imini? Wancedakala njani?

5. Zoba lamozulu yakho ubuthe uyayithanda kulebhokosi ingezantsi

Ukuphulaphula nokuthetha



Jongisisa lemifanekiso uze uphendule imibuzo engezantsi.

	spring	
	summer	
	autumn	
	winter	
	hot	
	cold	
	sun	
	cloud	
	rain	
	wind	

6 Weather and Seasons

basic education

ISBN 978-1-4313-3166-0

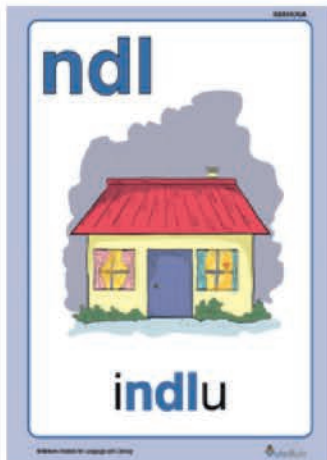
1. Ubize amaxesha onyaka izolo. Ngoku khawuxelele umzali, ucinga leliphi ixesha lonyaka elikumfanekiso ngamnye? Ubona ngantoni?
2. Ngeziphi iinyanga zasehlotyeni? Izeziphi ezasebusika?
3. Sikweliphi ixesha lonyaka ngoku?
4. Sitya ntoni, kwaye sinxiba ntoni kwixesha ngalinye lonyaka?

Ukufunda izandi



20 min

Sisaqhubeka ngesandi sethu u-ndi.



Funda inkcazelo uze ufakele impendulo echanelekileyo enesandi u-ndi ecaleni kwenkcazelo yayo.

Esona silwanyana sinentamo ende.	
Indawo ebangqula kuyo abeXhosa xa besenza umcimbi.	
Esona silwanyana sineendlebe ezinkulu.	
Ixesha lonyaka.	
Indawo ehamba iimoto	
Umntwana ongenambeko	
Into esiyisebenzisayo xa simamela	

Ukukubhala ngesandla

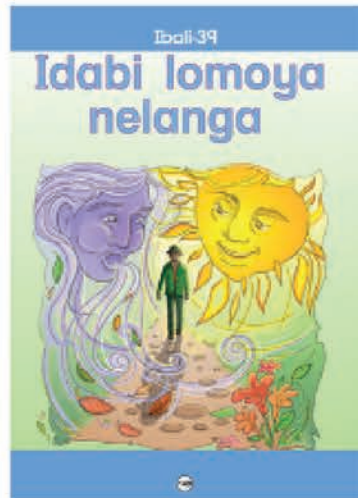


20 min

Kuphela ezizivakalisi kumgca ongezantsi. Uggubezele nepateni.

1. Indlulamthi inentamo ende.

2. Indlovu ayisindwa ngumboko wayo.



Ukushwankathela: yintetho emfutshane yokuchaza ibali. Ichaza isihloko, abalinganiswa, indawo eyenzeka kuyo ibali, ingxaki ethe yavela ebalini kunye nesisombululo sengxaki leyo.

Ngoku lifunde ibali lakho kathathu uze olishwankathele ngokwesisikhokelo.

Isihloko:	
Isihloko:	Lenzekaphi ibali
Ingxaki	Isombululo

Ukuphulaphula nokuthetha



20 min

Jongani lomfanekiso ze nixoxe ngale mibuzo ingezantsi.

POSTER **6** Weather and Seasons

Rainbow WORKBOOKS Grade 3 SAL

basic education Department: Basic Education REPUBLIC OF SOUTH AFRICA

ISBN 978-1-4316-3166-0 THIS POSTER MAY NOT BE SOLD.

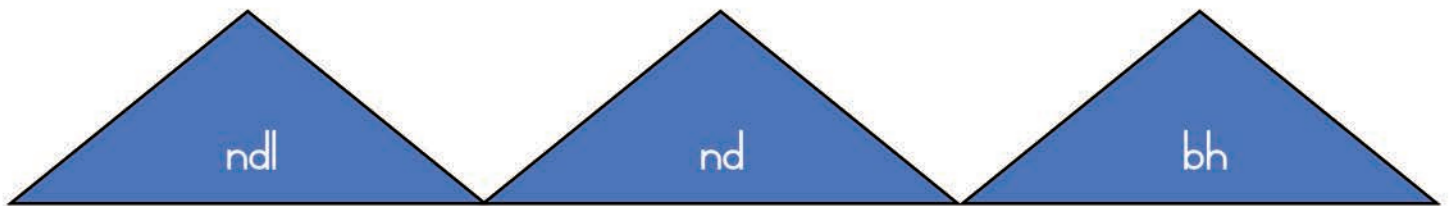
1. Khawuphe lomfanekiso wethu isihloko uze usibhale kulamgca ungentla.
2. Tshatisa isivakalisi nexesha laso lonyaka apha kuletafile:

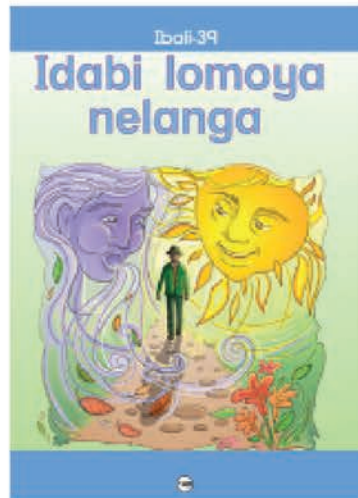
Amagqabi omthi ayawa kwaye atshintsha umbala.	ehlotyeni
Izilwanyana ezininzi ziyasokola ukufuamana ukutya ngelixesha.	ebusika
Kuqalisa ukufudumala. Amagqabi neentyatyambo ziyaqalisa ukuphuma.	ekwindla
Imini inde, ubusuku bufutshane.	entwasahlobo

3. Khawuqwebe eyakho ingoma ozakuyicula xa uvuna umbona nichola-chola iintyatyambo nomhlobo wakho. Yiculele umzali.

Hlela amagama asebhokisini uwabhale ngokwezindlu zawo.

Ibhodi indoda indlela ibhabhile induku ibhola iindaba indlulamthi inde isib-
indi indlavini ibhayibhile indlu dlala





Funda ibali kwakhona ze uphendule imibuzo.

1. Ubuzakuziva njani ukuba ibunguwe le ndoda?

2. Into enje yakhe yenzeka kuwe? Kwakutheni?

3. Ungazifanisa nomphi umlinganiswa kwabasebalini?

4. Wakhe walifunda elinye ibali elifana neli?

5. Ingaba ilanga likukhumbuza ngomphi umlinganisa?

6. Wakhe wayiva into enje? Phi?

Iveki yesi- 5

Usuku loku- 1

Umhla: _____

Ukuphulaphula nokuthetha



20 min

Jongisisa lemifanekiso uze uxoxe ngemibuzo engezantsi.



1. Ngumfanekiso wantoni lo? Khawubize zonke izidlo ozaziyo apha?
2. Uthanda ntoni wena kumgca ngamnye wokutya? Ngeyiphi ongayithandiyo kumgca ngamnye? Kutheni ungayithandi nje?
3. Kubaluleke ngantoni ukutya okusempilweni?
4. Bhala isidlo ngasinye ngesiXhosa ecaleni kwegama lesiNgesi.

Ukufunda izandi



20 min

Isandi esizakufunda ngaso kuleveki ngu -ty. Zama ukusibiza. Ngoku fundisisa lamagama am uze nawe ucinge awakho uwabhale kwizikhewu.



ityala

ityali

ityotyombe

ubhityile

Fakela isandi esishiyiweyo kwezizivakalisi zilandelayo.
tye tyu tya tyi tyo

1. ULunga ukha amanzi ngesi_____ esivuzayo.
2. Musa ukuyigalela kangaka i_____wa ekutyeni..
3. Itoti yejem kamama i_____bokile
4. Kuthiwa uzaku _____lela eKapa kule holide.
5. Kumanzi iya_____bilika imoto katata wam.

Ukubhala ngesandla



Ngoku thatha epensile yakho ulungiselele ukubhala kakuhle. Gcwalisa lemigca ngokukhuphela lepateni, ezizandi kunye nalamagama. Khumbula, ungayiphakamisi ipensile yakho xa usenze ipateni de uyigqibe.

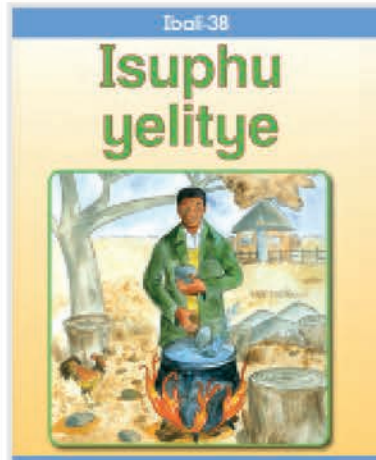
www

ty ty ty

isitya ityala ityuwa

1. Isitya esihle sigcwele ukutya kukatata.

2. Ibhityo likamama lityiwe ziingcongconi.



Thata incwadi yakho yamabali, ujonge kwiphepha 130 ibali "Isuphu yelitye", wandule uphendule lemibuzo ilandelayo.

1. Inokuba lingantoni eli bali?

2. Ungalinika esiphi isihloko eli bali?

3. Inokuba kuzakwenzeka ntoni kwelibali?

Ngoku funda ibali.

Ukuphulaphula nokuthetha



20 min

Jonga lemifanekiso kwakhona uze uphendule imibuzo engezantsi.



1. Cinga isihloko onokusinika lomfanekiso uze usibhale kumgca ongentla.
 2. Sesiphi isiqhamo esifumaneka ebusika? Sesiphi esifumaneka ehlotyeni? Ucinga kutheni zifumaneka ngalomaxesha onyaka ezoziqhamo?
 3. Cinga ngomzimba wakho, ngako konke okungaphandle nangaphakathi. Ngoku khawuncokole nomzali ngezakha-umzimba. Zintoni izakha-mzimba? Sizifuma-naphi? Ziwakha njani umzimba?
 4. Kuletafile ingezantsi khawujonge ilungu lomzimba uze ecaleni ubhale isakha-mzimba welungu elo.
- Xa ugqibile ukubhala ezam, khawuzindicingele elakho ilungu lomzimba kunye ne-sakha-mzimba salo uze uzibhalele ngezantsi.

Ilungu lomzimba	Isakha-mzimba
amehlo	umnqathe
intliziyo	
amathambo	
amazinyo	


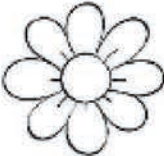



Ukufunda izandi

20 min

Sisaqhubeka ngesandi sethu u-ty.



Kuletafile ingezantsi, tshatisa igama nomfanekiso walo uze ubhale izivakalisi salo ecaleni komfanekiso lowo.

igama	umfanekiso	isivakalisi
isitya		
ityuwa		
ibhatyi		Isitya sikamama sityela uNomakushe.
tyibilika		
intyatyambo		

Ukukubhala ngesandla



Gqibezela ipateni uze ukhuphele ezizivakalisi kumgca ongezantsi. Ungalibali ukushiya isikhewu phakathi kwamagama.

uuuu

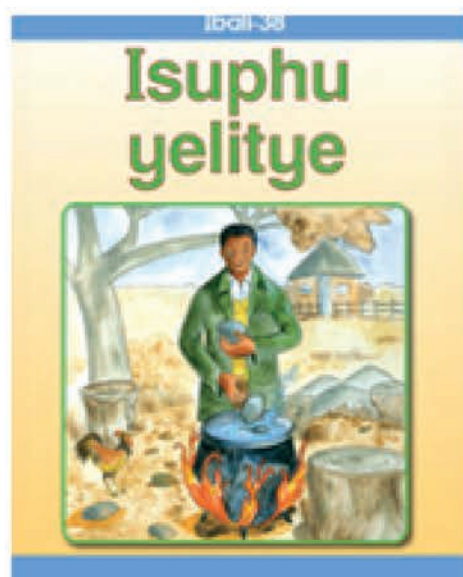
ty ty ty

isitya ityala ityuwa

1. Isitya esihle sigcwele ukutya kukatata.

2. Ibhityo likamama lityiwe ziingcongconi.

Ukufunda



Ukulandelelanisa ibali: kukulandelelanisa ibali ngendlela elenzeke ngalo.

Ekugqaleni kwenzeke ntoni

kwaze kwathini

ekugqibeleni

Ukuphulaphula nokuthetha



20 min

The food pyramid is divided into several layers, each with associated food items and labels in boxes:

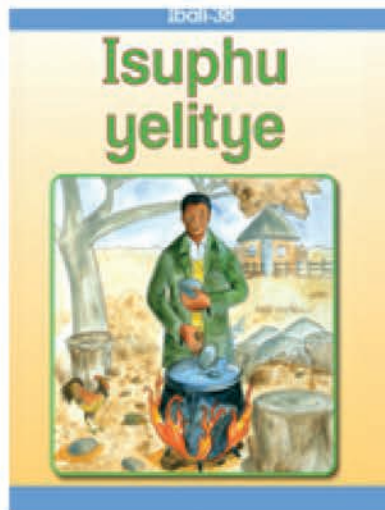
- Top Layer (Blue):** milk, cheese, yogurt
- Second Layer (Red):** chicken, meat, fish
- Third Layer (Green):** fruit, vegetables
- Bottom Layer (Yellow/Orange):** rice, pasta, bread, pap

Labels on the left side of the pyramid include: nuts, eggs, chicken, meat, bacon, fish.

1. Xoxani ngezizihloko zikule tafile ingezantsi. Xa niggibile ubhale iintlobo zokutya phantsi kwesihloko saso.

Imveliso zobisi	Iziqhamo	Imifuno	Okuvela kwizilwanyana

2. Kokukutya kungentla, khawuxoxe uze undizobe into ozakukhetha ukuyitya ngesidlo ngasinye esibhaliweyo ngezantsi. Zoba kwesesitya ndikuzobele sona.



Funda ibali kwakhona ze uphendule imibuzo.

1. Inokuba yayilusuku olunjani olu ekuhlaleni?

2. Leliphi icebo elifana neli owakhe walisebenzisa? Kwakutheni?

3. Umhambi wayehlakaniphile? Kutheni usitsho?

4. Le meko ungayifanisa neyiphi imeko ekuhlaleni?

5. Sesiphi isakhono osifunde kweli bali?

Isigama: khangela lamagama alandelayo ze ubiyele igama ngalinye olifumeneyo kwiphazili. Lifunde ngokukhawuleza ze ulisebenzise kwisivakalisi. Ulibonisiwe igama elinye.

e	j	p	w	a	l	a	l	r	z	i	o
p	y	g	i	s	i	t	i	y	a	v	l
d	x	s	u	k	u	v	u	n	a	d	j
t	o	s	h	i	b	k	q	s	d	z	j
u	m	f	a	m	a	x	m	h	p	u	r
l	i	z	i	m	i	s	e	l	e	g	o
h	n	g	a	m	a	n	q	i	n	a	k
r	u	m	b	h	i	n	q	o	c	j	u



agama axwesileyo: isitiya; izimisele; ngamanqina; umfama; umbhinqo; ukuvuna; wala

b	c	i	k	i	l	i	s	h	e	p	o
p	s	h	u	u	e	o	n	d	p	v	m
u	v	t	i	e	l	e	d	m	w	b	e
k	i	n	z	i	m	a	w	q	c	v	y
a	b	a	s	e	b	e	n	z	i	m	s
p	n	i	l	o	v	a	n	e	m	y	l
z	y	m	h	o	r	s	j	p	s	s	b
p	s	g	q	i	e	m	e	l	e	r	i



Amagama axwesileyo: abasebenzi; iemele; inzima; icikilishe; shu; ilovane

n	u	g	q	a	t	s	o	j	j	y	u
f	u	y	f	b	i	m	i	t	s	i	s
i	b	a	n	d	l	a	v	l	p	c	i
b	p	k	p	m	k	w	c	x	p	j	n
g	i	m	v	e	l	o	o	f	v	v	g
w	a	p	h	u	n	g	u	z	a	d	a
t	e	q	n	g	a	m	e	n	d	u	h
i	i	n	d	l	e	k	o	l	r	o	r



Amagama axwesileyo: ugqatsho; ngamendu;
waphunguza; iindleko;
ibandla; imitsi; imvelo

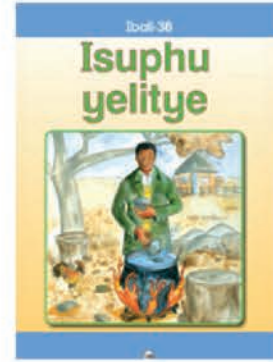
Amagama ahileyo: usinga

q	c	v	u	t	h	u	z	a	p	a	z
u	k	u	b	a	l	e	l	a	c	w	l
y	a	q	h	a	q	h	a	z	e	l	a
t	s	h	a	b	a	l	a	l	i	s	a
g	q	u	t	h	a	z	u	p	p	a	u
d	f	u	d	u	m	e	l	e	y	o	q
i	x	h	a	t	h	i	s	i	l	e	f
r	x	m	f	s	i	t	h	e	l	a	f



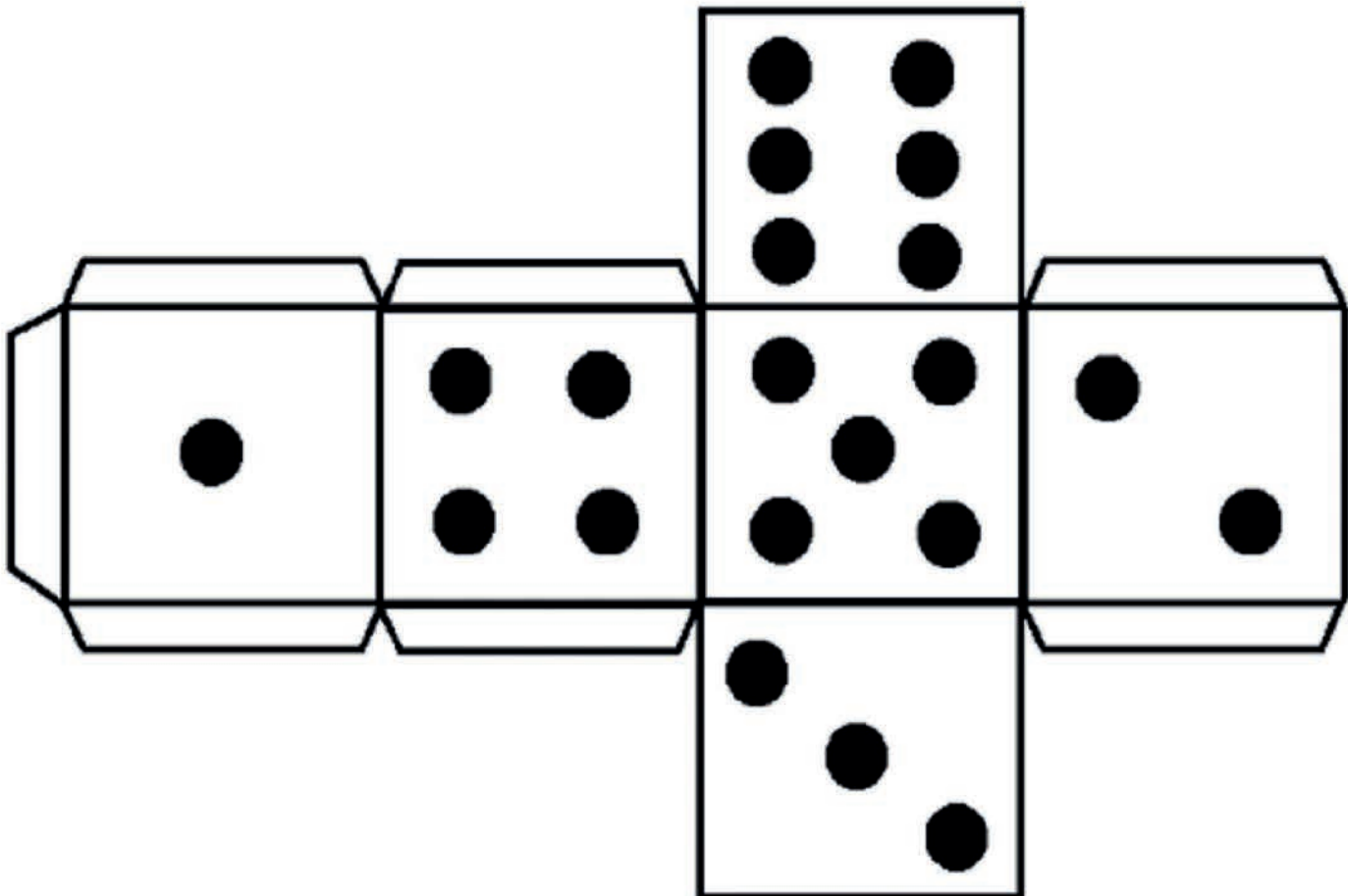
Amagama axwesileyo: fudumeleyo; tshabalalisa;
ixhathisile; sithela; qhaqhazela;
ukubalela; vuthuza; gqutha

j	j	u	n	a	m	b	i	t	h	a	c
s	x	k	u	j	w	n	d	j	n	z	c
v	c	u	z	t	c	q	x	p	p	u	h
a	g	u	d	i	l	e	y	o	c	a	a
t	c	h	o	p	h	a	r	t	q	e	t
s	z	o	i	s	o	n	g	o	r	g	h
t	r	u	k	w	a	b	a	i	s	z	a
s	i	g	a	m	a	l	i	z	o	e	y



Amagama axwesileyo: agudileyo; amalizo; nambitha;
ukwaba; isongo; chopha

Amagama ahileyo: chatha



gw	ny	rh	hl	dl	tsh	gq	ty
nw	nt	nq	xh	ts	nj	tsh	gc
kw	qh	tsh	m	gq	nc	nt	ng
mp	mp	nj	nx	nc	ts	gq	nt
ch	ndl	qw	nk	nc	ty	rh	ny
dl	gc	mb	th	nc	ph	nc	sh
ng	nd	kh	hl	nq	nw	qh	gq
→	c	v	b	n	M	f	w



Funda Wande

Reading for Meaning