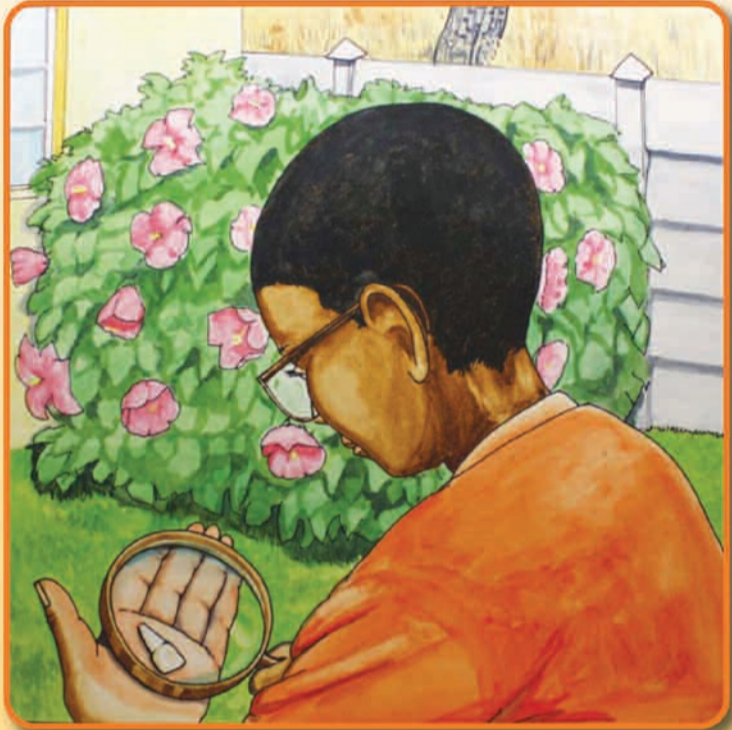


Amabali afundwa ngokuvakalayo eencwadana 21-24

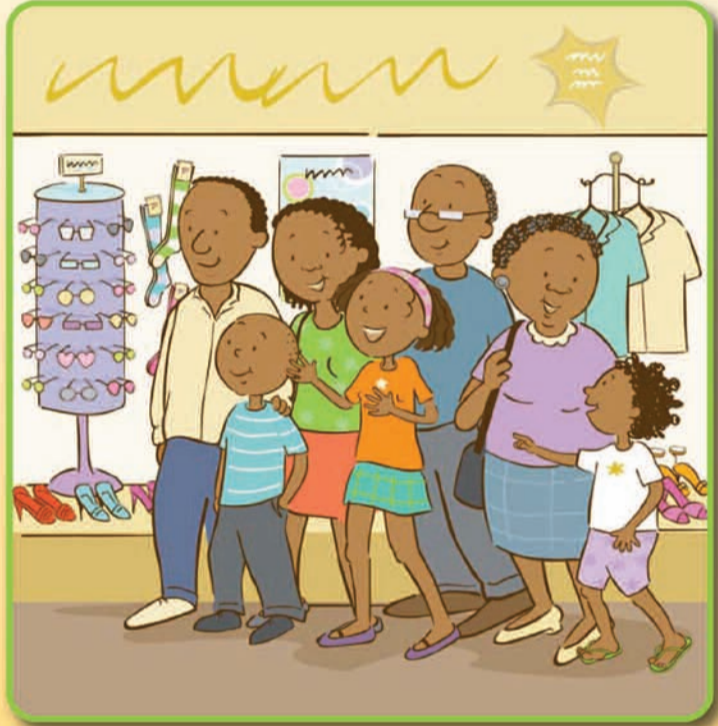
Incwadana 21 ★★★★

Izinyo




Incwadana 22 ★★★★

Evenkileni yempahla




Incwadana 23 ★★★★

Umnqathe omkhulukazi



Incwadana 24 ★★★★

Ibali lobugqi





VulaBula Isiseko senkqubo yobuchule bokufunda nokubhala kwabaselula

Ipapashwe 2011 ngabakwa-Molteno Institute for Language and Literacy

Ixhaswe yi-Zenex Foundation 

Umgangatho woku-1: Incwadi enkulu 6

- Iqela loPhengululo neMveliso yeNkqubo (Research & Development Unit)
 - Abaququzeleli: **Jenny Katz noMirna Lawrence**
 - Incutshe kulwimi isiXhosa: **Nolitha Bikitsha**
 - Umongameli nkqubo: **Dr Paula Gains**
- Abazekelisi: **Ibali 21 Izinyo: Rob Owen; Ibali 22 Evenkileni yempahla ne-Ibali 23 Umnqathe omkhulukazi: Sandy Lightley; Ibali 24 Ibali lobugqi: Vusi Malindi**
- Uyilo nongqaleko: **Resolution**

© 2011 Molteno Institute for Language and Literacy



ISBN 978-1-920488-44-4



Creative Commons Attribution-NonCommercial-NoDerivatives (CC BY-NC-ND) 4.0 International Licence

Disclaimer: You are free to download and share this work as long as you attribute the Molteno Institute for Language and Literacy, but you may not change this work in any way or use it commercially.

Iziqulatho

Ibali 21: Izinyo

- Phambi kokuba kufundwe nangexesha lokufunda: ingqalelo katitshala 2
- Ibali elifundwa ngokuvakalayo 3
- Emva kokufunda: ingqalelo katitshala 11



Ibali 22: Evenkileni yempahla

- Phambi kokuba kufundwe nangexesha lokufunda: ingqalelo katitshala 12
- Ibali elifundwa ngokuvakalayo 13
- Emva kokufunda: ingqalelo katitshala 21



Ibali 23: Umnqathe omkhulukazi

- Phambi kokuba kufundwe nangexesha lokufunda: ingqalelo katitshala 22
- Ibali elifundwa ngokuvakalayo 23
- Emva kokufunda: ingqalelo katitshala 31



Ibali 24: Ibali lobugqi

- Phambi kokuba kufundwe nangexesha lokufunda: ingqalelo katitshala 32
- Ibali elifundwa ngokuvakalayo 33
- Emva kokufunda: ingqalelo katitshala 41



21 IZINYO ISISHWANKATHELO SEBALI SIKATITSHALA

ULwazi uchola izinyo. Lincinci, limhlophe ngebala. Ucinga ukuba lelesilwanyana esingaqhelekanga. Ulanda incwadi yakhe yolwazi ngezilwanyana ukuqinisekisa. Usebenzisa isixhobo sokupopola ukuthelekisa izinyo esandleni sakhe namazinyo kwimifanekiso esencwadini; ibamba lenyoka, izinyo lengonyama, izinyo lebuzi, izinyo lelulwane kwakunye nenyosi – yona engenamazinyo! Kodwa alikho izinyo kula mazinyo ezi zilwanyana elifanayo nelo lisesandleni sakhe. Kusenjalo, uLwazi ubona udade wabo omncinci uBabalwa. UBabalwa uncumela uLwazi. Kwangoko uLwazi ufumanisa ukuba lizinyo likaBabalwa eli – ngokubona isikhewu kumazinyo akhe angaphambili!

PHAMBI KOKUBA KUFUNDWE

ISIGAMA

Buza imibuzo ekhokelayo ukuqinisekisa okokuba abafundi bayayilandela intsingiselo yamagama angundoqo asebalini, umzekelo: 'Ingaba sisisebenzisa ukwenza ntoni isixhobo sokupopola?', 'Yintoni incwadi yolwazi?', 'Ingaba kukhona izilwanyana ozaziyo ezinamabamba?' njl. njl. Sebenzisa imifanekiso, izilinganiso nezinye iindlela zokuchaza ukufundisa intsingiselo yamagama amatsha nangaziwayo ngabafundi. Yalela abafundi ukuba basebenzise igama ngalinye bakhe isivakalisi ngomlomo:

isixhobo sokupopola	incwadi yolwazi	amabamba	ibuzi	ilulwane	thelekisa
izinambuzane	incindi yeentyatyambo	khazimla	bukhali	iliva	umnikazi

UMHOBE

Chazela abafundi ukuba ibali lingamazinyo. Fundisa abafundi umhobe. Abafundi bangacengceleza kunye nawe phambi kokuba ubafundele ibali.

IMIBUZO

Bonisa umfanekiso oseluwqeqweni lwencwadi yebali kwiphepha lesi-3. Buza:

- Iphi inkwenkwana?
Ingaphandle egadini
- Iphethe ntoni esandleni sayo inkwenkwana?
Vumela abafundi baqashele impendulo.

Alatha ufunde igama lebali. Fumanisa ngempendulo yabafundi ukuba baqashele ngokuchanekileyo na ukuba inkwenkwana iphetha izinyo. Buza:

- Ingaba uyalazi igama lalento inkwenkwana ijonga ngayo?
Sisixhobo sokupopola.
- Ingaba sisisebenzisa ukwenza ntoni isixhobo sokupopola?
Sisisebenzisa ukwandisa ngokujonga izinto ukuze zikhangeleke nkulu zibonakale ngokucacileyo.
- Ucinga ukuba lelikabani eli zinyo?
Bhala iingcinga neengcebiso zabafundi ebhodini. Emva kokufunda, fumana oqashele ngokuchanekileyo.

NGEXESHA LOKUFUNDA

IMIBUZO

Funda isicatshulwa kwiphepha ngalinye ngokuvakalayo phambi kokubonisa abafundi umfanekiso.

Nqumama phambi kokufunda kwiphepha lesi-7, walathe kumazinyo ebuzi. Buza:

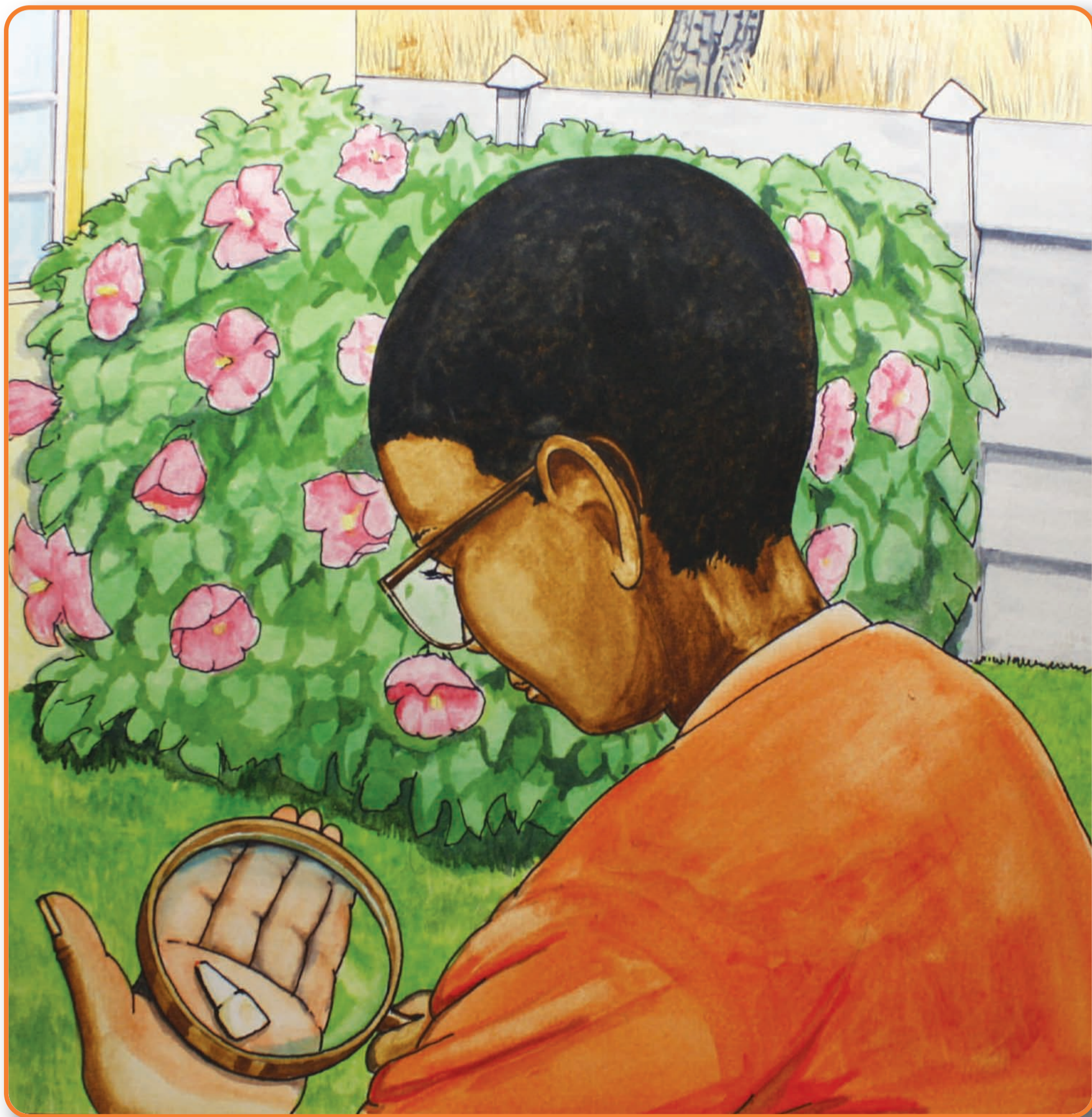
- Ucinga ukuba izinyo elicholwe nguLwazi lelebuzi? Yintoni ebangela ukuba ucinge ngolu hlobo?
Vumela umfundi okanye ababini babalise ngezimvo zabo.

Bonisa abafundi umfanekiso okwiphepha le-10 ngexesha ubafundela imigca emithathu neyeyokugqibela yebali. Emva koko, buza:

- Lizinyo likabani eli?
Lizinyo likaBabalwa.

Ndinentlama nebrashi yam yamazinyo
Kancinane ndithatha ixesha lam
Ndixukuxa ndicoce amazinyo am
Aphambili angemva nasecaleni
Ndiqiniseke onke acocekile
Ekugqibeleni, nditsho ngolona ncumo!

Izinyo





Ngenye imini uLwazi uchola nto. Incinci, imhlophe, iyakhazimla.

‘Liliso, lilitye?’ uyazibuza exakiwe. Eqwalasela ngomdla, uLwazi ubona izinyo. ‘Inokuba lizinyo lantoni? Ingaba lizinyo lesilwanyana?’ uyazibuza elibuka uLwazi efunisela.

ULwazi, uzixelela ukuba uza kufumanisa ngeli zinyo.



ULwazi ulanda isixhobo sakhe sokupopola abeke apha nencwadi yakhe yolwazi. Utyhila kwicandelo lezilwanyana. Ubona umfanekiso wenyoka ekhamisileyo ilungiselela ukuluma ixhoba.

ULwazi upopola amazinyo ayo athelekise nezinyo esandleni sakhe. Inyoka inamabamba amade alucwecwe nabukhali okwenaliti.

Hayi, asililo izinyo lenyoka eli. Eli izinyo esandleni sakhe lincinci lisisikwere.

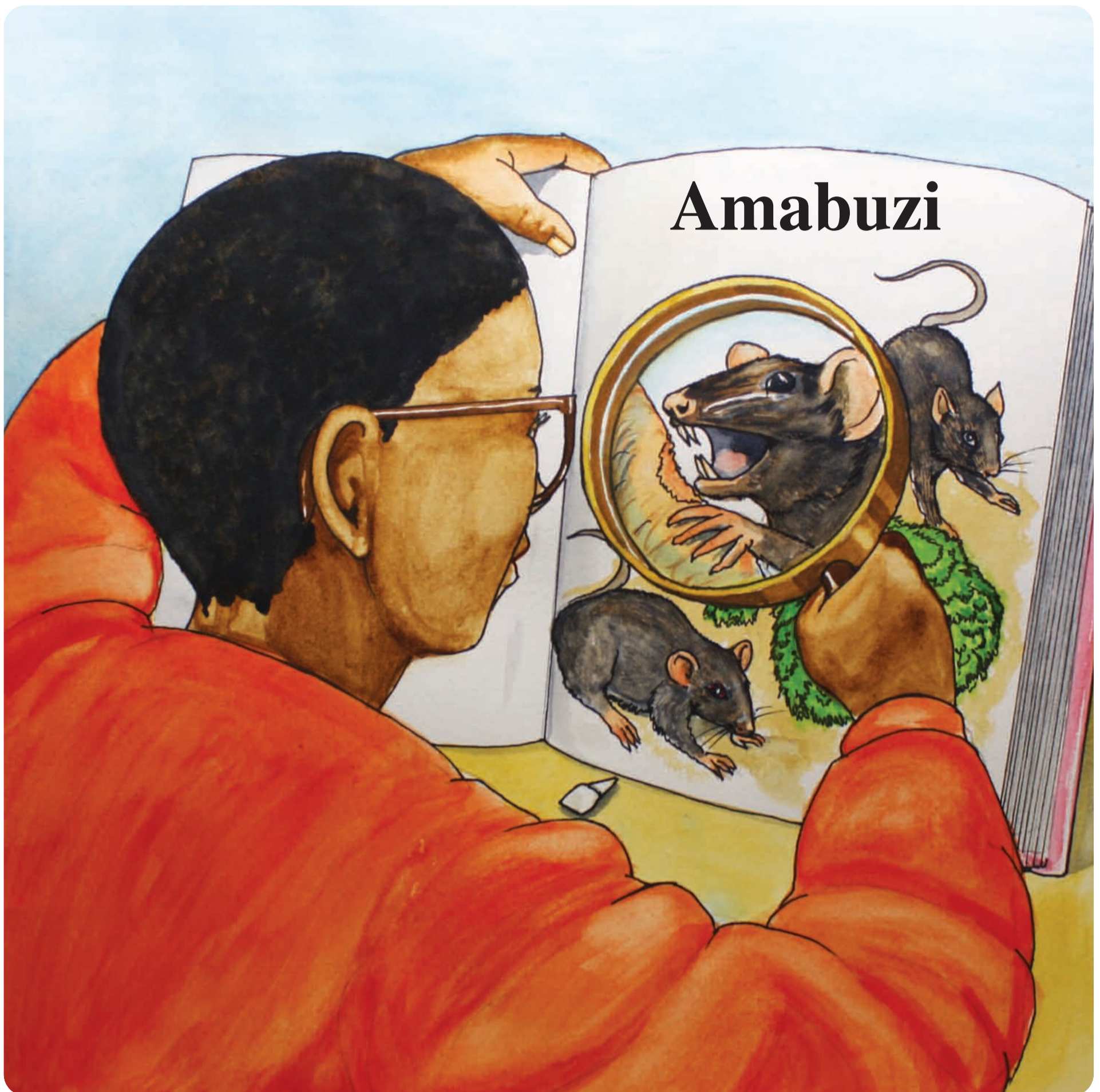
‘Hayi. Amazinyo enyoka awafani neli zinyo,’ uyacinga uLwazi.



ULwazi utyhila amaphepha encwadi ufikelela kwicandelo lezilwanyana zasendle. Ubona umfanekiso wesinye isilwanyana, ingonyama. Inkulu, ikhamisile, iyagquma.

ULwazi upopola enyamekile amazinyo engonyama emfanekisweni athelekise nezinyo esandleni sakhe. Asililo izinyo lengonyama eli. Elengonyama lide, likhulu libukhali okwemela. Eli zinyo esandleni sikaLwazi, lincinci limtyaba.

‘Hayi. Amazinyo engonyama awafani neli zinyo,’ uyacinga uLwazi.



ULwazi uyatyhila kwakhona. Ufika kwicandelo lezilwanyana ezinqunquthayo. Ubona umfanekiso webuzi elimnyama liditya.

Uyanyameka upopola amazinyo eli buzi lisencwadini, athelekise nezinyo esandleni sakhe. ULwazi ufumanisa ukuba asililo nezinyo lebuzi eli. Izinyo lebuzi lide, lilucwecwe, limthubi ngebala. Izinyo esandleni sakhe, lincinci, limtyaba, limhlophe ngebala.

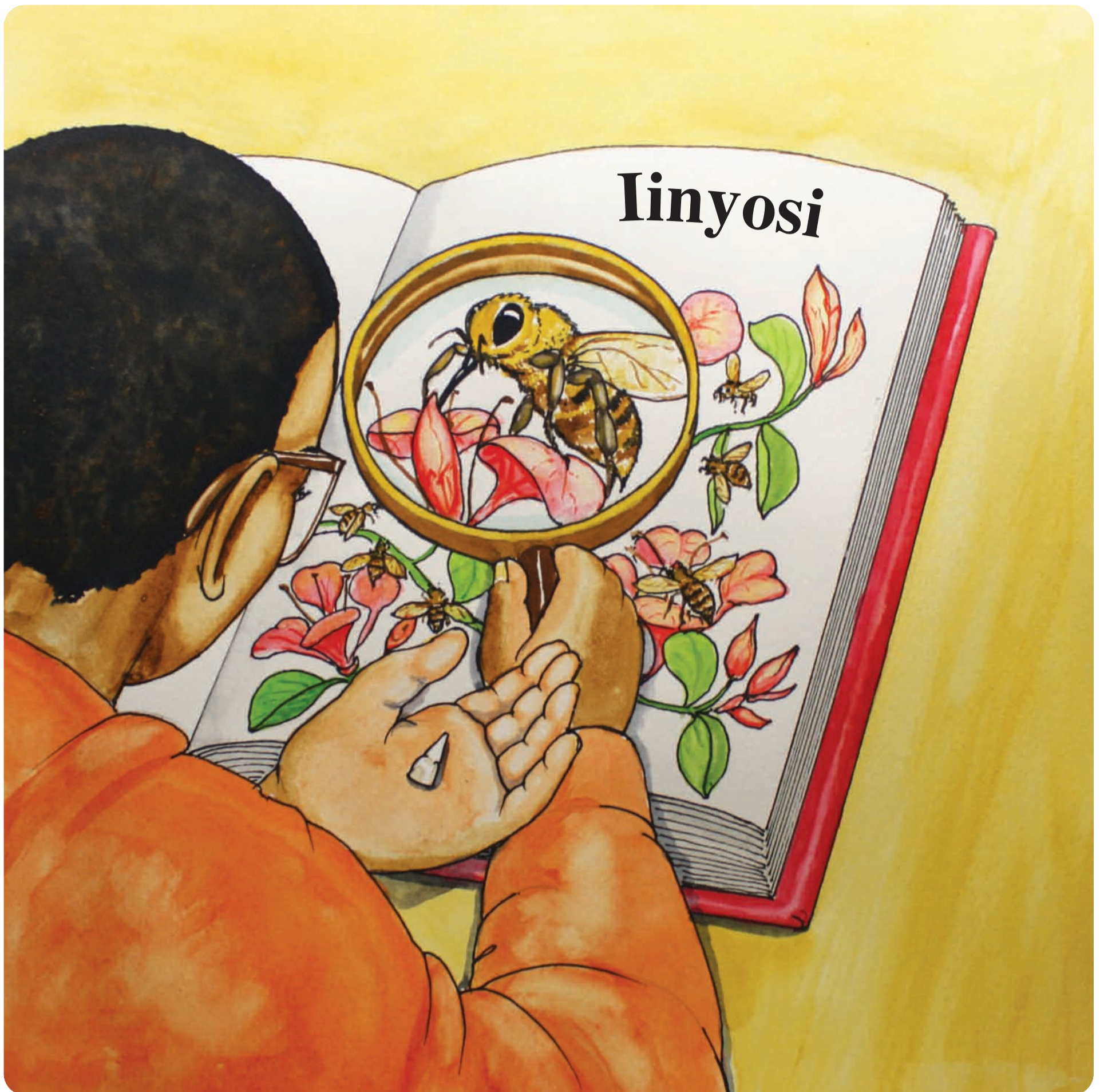
‘Hayi. Amazinyo ebuzi awafani neli zinyo,’ uyacinga uLwazi.



ULwazi uyatyhila ufikelela kwicandelo lezilwanyana ezibhabhayo.
Ubona umfanekiso welulwane.

Upopola amazinyo elulwane emfanekisweni athelekise nezinyo esandleni sakhe.
Eli zinyo esandleni sikaLwazi, asililo izinyo lelulwane. Izinyo lelulwane lincinane
okweliva, libukhali okwencakuba. Eli lisesandleni, lincinci limtyaba.

‘Hayi. Amazinyo elulwane awafani neli zinyo,’ uyacinga uLwazi.



Usafunisela uLwazi utyhila amaphepha. Kweli candelo lezinambuzane, ubona umfanekiso wenyosi isitya incindi yeentyatyambo.

Uyanyameka kwakhona upopola amazinyo enyosi, athelekise nezinyo esandleni sakhe.

Akaboni mazingo! Esi silwanyana asinamazingo! Inyosi inolwimi olude!
'Asilozinyo lenyosi eli. Kodwa, kumele ukuba linomnikazi!' uyacinga uLwazi.



ULwazi uqoqosha incwadi yolwazi nesixhobo sokupopola azibeke ekhabhathini. Uqwalasela izinyo elincinci nelikhazimlayo elisesandleni sakhe. Usafunisela ezibuza ukuba lelikabani na.

Esalibuka njalo, kuvela udade wabo omncinane uBabalwa abulise encumile, 'Molo, Lwazi!'

ULwazi naye encumile, upopola amazinyo kaBabalwa ... Uqwalasela izinyo esandleni sakhe. Umfumene umnikazi wezinyo!

EMVA KOKUFUNDA

IMIBUZO

Vavanya ulwazi. Buza:

- ULwazi wayecinga ukuba lizinyo lantoni eli ekuqaleni?
Wayecinga ukuba lilitye elincinci okanye iliso.
- Kwakutheni uLwazi aze akhangele encwadini yolwazi yezilwanyana?
Wayefuna isilwanyana esinamazinyo afana nelo zinyo wayelichole.
- Sesiphi isilwanyana esinetyhefu kwezo wayefunisa kuzo?
Yinyoka
- Sesiphi isilwanyana esisinambuzane kwezo wayefunisa kuzo?
Yinyosi
- Yintoni eyamchazela ukuba lizinyo likaBabalwa eli uLwazi?
Wabona ukuba kukho isikhewu kumazinyo akhe angaphambili.

Vavanya ukulonwabela. Buza:

- Ulithandile na ibali? Yintoni oyithandileyo, yintoni ongayithandanga ngalo?
Vumela abafundi abambalwa babalise ngezimvo zabo.
- Apha kuni, ngubani okhumkileyo okanye owakhe wakhumka? Wenza ntoni ngamazinyo akho wakukhumka?
Fumanisa ngeempendulo zabafundi. Vumela abafundi babalise ngamava abo.
- Wakhe wawabona amazinyo esilwanyana okwenyani? Yayisesiphi isilwanyana? Ayefana nantoni amazinyo aso?
Vumela abafundi babalise ngamava abo.

IMISEBENZI

Ukufunda okubonwayo, ukumamela nokuthetha

- Balisa ibali usebenzisa imifanekiso kuphela. Bizela abafundi ngaphambili ukuza kuchonga isilwanyana kwiphepha ngalinye, umfundi achaze nangamazinyo esilwanyana eso. Umzekelo: *Le yinyoka. Inamazinyo amabini amade, alucwecwe abizwa ngokuba ngamabamba.* Abafundi bangachaza nangezinye nangesimo okanye ezinye iimpawu zesilwanyana ngasinye. Umzekelo: *Ingonyama inesingci. Ibuli linomsila omde. Ilulwane lineempiko. Inyosi ilibala elimnyama namthubi, njl. njl.* Ungabavumela abafundi babelane nangolunye ulwazi abanalo ngezilwanyana ezisebalini.
- Lungisa amagama esilwanyana ngasinye esisebalini abhalwe kumacwecwana:

inyoka

ingonyama

ibuzi

ilulwane

inyosi

Lungisa namacwecwana anamagama asininzi sesilwanyana ngasinye ukuze abafundi babone umahluko kwisimaphambili segama:

iinyoka

iingonyama

amabuzi

amalulwane

iinyosi

Bizela abafundi ngaphambili unike umfundi nomfundi icwecwana. Abafundi banikana amathuba ukufumana isilwanyana esiligama elibhalwe ecwecweni ebalini.

Ukufunda kunye nezandi

- Alatha igama leballi u-“Izinyo” kwiphepha lesi-3. Nceda abafundi ukuqingqa amagama nokufunda igama kunye nawe (*i-zi-nyo*). Tsalela ingqalelo yabafundi kwisandi u-“ny”.
- Sebenzisa amacwecwana angentla nabhalwe amagama ezilwanyana ukulungisa la macwecwana alandelayo:

izinyo

amazinyo

isilwanyana

izilwanyana

incwadi yolwazi

Yalela abafundi baziqhelanise nala magama, ngokuwafunda yonke imihla. Xhoma amagama egumbini lokufundela kwindawo ebonakalayo kubafundi, ixesha elingangeveki.

22 EVENKILENI YEMPAHLA ISISHWANKATHELO SEBALI SIKATITSHALA

Usapho luze kuthenga impahla evenkileni. Umama udinga izihlangu ezitsha, utata udinga amehlo elanga amatsha, umakhulu udinga umnqwazi omtsha, utatomkhulu udinga isikhafu esitsha, usisi udinga iikawusi ezintsha, ubhuti udinga ihempe entsha. Wonke umntu uyifumene into ebeyidinga. Usapho lundawonye lulindele ukubhatala. Elowo nalowo uzithengele ngaphandle kwentombi encinane uThenjiwe. Nguye lowo evela uThenjiwe. Kuthe kanti uyaziqokelelela naye kanye impahla ezifana nezo usapho lwakhe luze kuzithenga. Zilibala elinye zonke – zipinki, elona bala alithandayo! Uzinxibile zonke impahla uThenjiwe – zizihlangu ezipinki, amehlo elanga apinki, umnqwazi opinki, isikhafu esipinki, iikawusi ezipinki nehempe epinki! Indlela akhangeleka ngayo uThenjiwe, iyahlekisa ngenene!

PHAMBI KOKUBA KUFUNDWE

ISIGAMA

Buza imibuzo ekhokelayo ukuqinisekisa okokuba abafundi bayayilandela intsingiselo yamagama angundoqo asebalini, umzekelo: ‘Ngubani ongandibonisa ukudanisa ngeenzwane okanye ngomlenze omnye ujikeleza?’, ‘Ingaba siwanxibelani amehlo elanga?’, ‘Ngubani ongema alinganise umculi wodumo?’ njl. njl. Sebenzisa imifanekiso, izilinganiso nezinye iindlela zokuchaza ukufundisa intsingiselo yamagama amatsha nangaziwayo ngabafundi. Yalela abafundi ukuba basebenzise igama ngalinye bakhe isivakalisi ngomlomo:

ukujikeleza komdanisi	amehlo elanga	umculi wodumo	inene	linganisa	usiba
isikhafu	umdlali weqonga	imvumi yala maxesha	ikwayala	umlonji	umculisi

UMDLALO

Dlala umdlalo “Bendiye evenkileni” nabafundi. Xelela abafundi ukuba baquke izinto ezinxitywayo kuphela. Qala ngokuthi, ‘*Bendiye evenkileni ndaze ndathenga ilokhwe*’. Umfundi woku-1 uphinda intetho ongeze enye into, ‘*Bendiye evenkileni ndaze ndathenga ilokhwe nepijama*’. Umfundi wesi-2 uyaqhubeka ngokuphinda intetho yomfundi woku-1 abuye ongeze enye into, ‘*Bendiye evenkileni ndaze ndathenga ilokhwe, ipijama nejezi*’ njl. njl. Ukuba umfundi uye walibala into ethengiweyo okanye wangazilandelelanisi ngokuchanekileyo, umfundi lowo uyaphuma emdlalweni.

IMIBUZO

Bonisa umfanekiso oseluwqeqweni lwencwadi yebali kwiphepha le-13. Buza:

- Mangaphi amalungu olu sapho? Ungawachaza?
Khokela abafundi ukuchonga osixhenxe amalungu ahlukeneyo osapho – utata, umama, ubhuti, usisi omdala, usisi omncinci, umakhulu, utatomkhulu.

Alatha egameni leballi uthi:

- Igama leballi lithi “Evenkileni yempahla”. Zeziphi iintlobo zezinto ongazithenga kule venkile?
Abafundi bangachonga izihlangu, amehlo elanga, iikawusi nehempe ekuboniswe ngazo efestileni evenkileni.
- Ucinga ukuba luza kuthenga ntoni usapho?
Vumela abafundi babalise ngeengcebiso zabo ngezinto abacinga ilungu nelungu losapho luza kuzithenga.

NGEXESHA LOKUFUNDA

IMIBUZO

Bonisa imifanekiso kanye ngexesha ufunda isicatshulwa iphepha nephepha.

Nqumama kwiphepha le-18. Khomba umfanekiso ubuze:

- Ucinga ukuba usisi omdala uyazithanda iikawusi zakhe ezintsha? Kutheni ucinga njalo?
Ewe, uncumile waye uyazincoma uyazibuka esipilini.

Nqumama kwiphepha le-19. Khomba umfanekiso ubuze:

- Ingaba uyabona ukuba wenza ntoni usisi omncinci?
Uyaqokelela ezithengela kweyakhe ibhaskithi izinto ezifanayo nezo amanye amalungu osapho azithengayo – zilibala elinye zonke, zipinki!

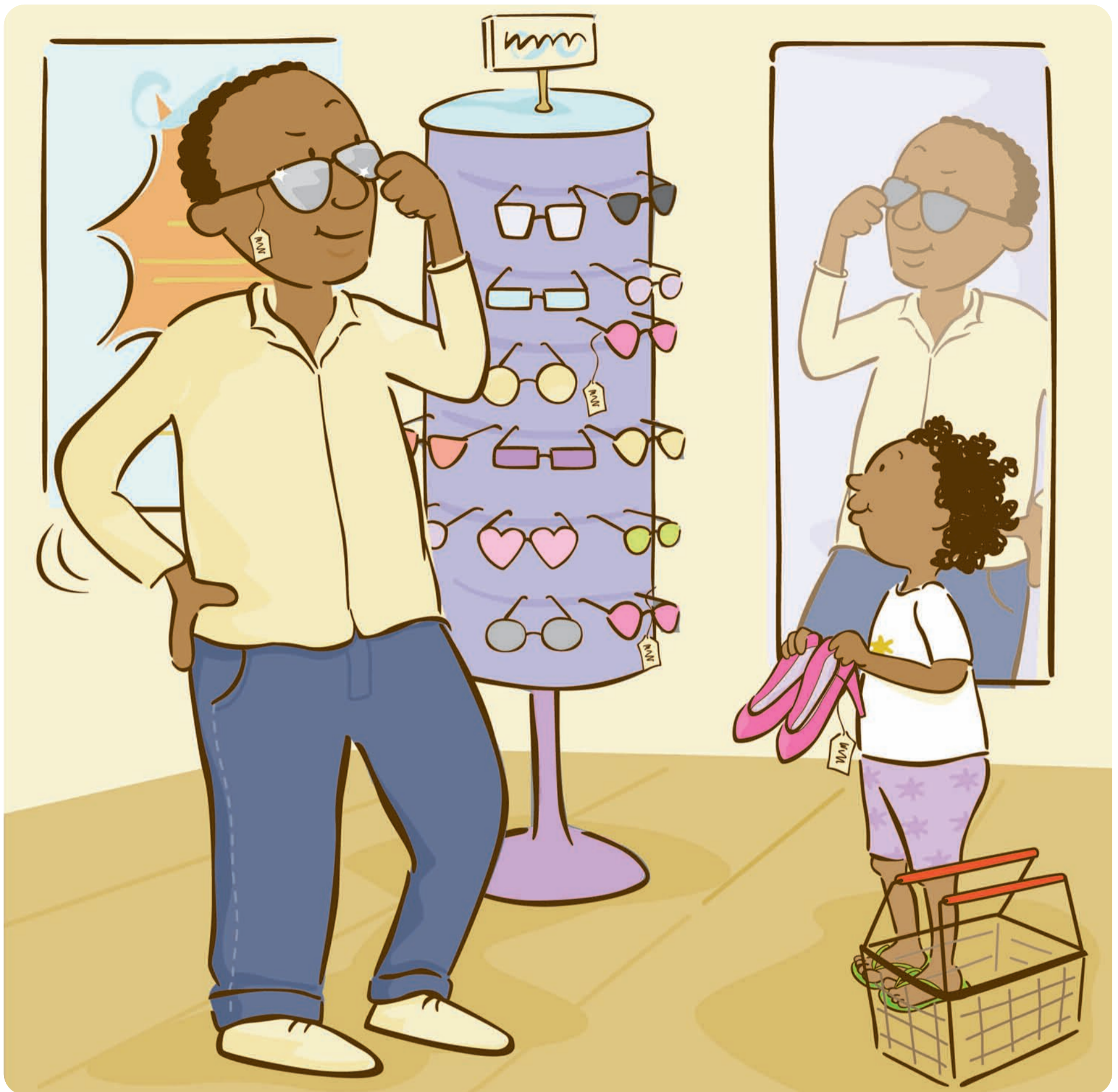
Evenkileni yempahla



Kuyimpela-veki. Usapho ekhaya luze kuthenga kule venkile yempahla namhlanje. Ngulowo nalowo uza kuthenga into eyahlukileyo.



Khawubone umama! Yena uzifunela nje isihlangu esihle aza kusinxiba emtshatweni. Ulinganisa esi sihlangu sigolide. Siphakame njengezihlangu zabadanisi. Ukuzimisela kwakhe! Ujikeleza okomdanisi uzibuka esipilini. Kwayena, uziva ngathi unguye umdanisi kwesi sihlangu! Iyamfanela impahla umama!



Khangela utata! Yena uzifunela amehlo elanga. Uyawadinga amehlo amatsha kuba wawaphula amehlo akhe elanga amadala. Wahlala phezu kwawo engaqondanga!

Uwathanda kanjani ke utata la mehlo elanga asisipili! Umane ewanyusa ewalungisa njalo apha empumleni. Uyazibuka esipilini. Indlela nje amfanela ngayo! Naye uzibona ngathi ngaba baculi bodumo badanisa kakhulu! Ulinene ke yena utata, akahlalwa mpukane!



Jonga umakhulu! Ulinganisa iminqwazi. Ufuna umnqwazi aza kuwunxiba ecaweni. Uthanda lo mnqwazi uorenji. Mhle, uqaqiwe, uhonjisiwe nangosiba, ukhaphu-khaphu.

Nomakhulu uma kakuhle, uphakamise isilevu, uzibuka esipilini. Ukufaneleka kwakhe! Uzibona ngathi yikumkanikazi xa enxibe lo mnqwazi! Mhle mpela umakhulu!



Khangela utatomkhulu! Ulinganisa izikhafu. Uyasidinga nakanjani isikhafu esitsha. Bubande kakhulu ubusika kunyaka ophelileyo. Ziyafumaneka zizindidi izikhafu kule venkile. Zilukiwe, zezewulu, zezobusika, zezehlobo, ziyimibala ngemibala, njalo-njalo.

Ingathi utatomkhulu uthanda esi simhlophe namdaka umbala, simpakumpaku. Sikhangeleka sithambile saye siya kumgcina efudumele kubusika obuzayo. Mjonge, uzibuka esipilini. Uyaziva! Uzibona ngathi ungumdlali weqonga utatomkhulu!



Jonga usisi! Ulinganisa iikawusi. Uyayithanda usisi impahla! Uthenga impahla minyaka le! Ubona ezi kawusi zimibala-bala. Zezinjani phofu ezi? Oooh... Ingathi zezi izihlobo zakhe zinazo!

Akawazi umbala awufunayo kodwa uyacinga ukuba ezi zimibala-bala ziya kuhambelana nazo zonke impahla zakhe. Ziyamfanela ke kodwa. Mjonge, akasazimisele nje! Uzibona ngathi uyimvumi yala maxesha kwezi kawusi!



Jonga ubhuti! Uxakekile ulinganisa iihempe. Uyayidinga enye ihempe kuba uza kucula ekonsathini. Kaloku ubhuti ucula ekwayalini yesikolo yaye ucula njengomlonji.

Ubhuti akathandi nonjani na nje umbala. Mjonge kule hempe iluhlaza. Ewuthanda ke yena umbala oluhlaza! Akayeki ukuzibuka esipilini. Uyazithanda ubhuti, ufana notata. Ukuba mhle kwakhe, ingathi nguye oza kuculisa ikwayala!



Usapho luzifumene izinto ebelufuna ukuzithenga.

Umama unezihlangu ezitsha. Utata uthenge amehlo elanga.

Umakhulu ufumene umnqwazi. Utatomkhulu unesikhafu sobusika.

Usisi ufumene iikawusi, ubhuti wafumana ihempe.

‘UThenjiwe usana lwam, akafumananga namhlanje,’ uyacinga umama.

Kusenjalo, bayeva uThenjiwe ngelo lizwi lincinci, ‘Nam ndizikhethela ezam impahla!’

EMVA KOKUFUNDA

IMIBUZO

Vavanya ulwazi. Buza:

- Umama wayeziva njani akunxiba elinganisa izihlangu ezigolide?
Wayeziva ngathi ngumdanisi.
- Kwakutheni utata aze afune amehlo elanga amatsha?
Wahlala phezu kwawo engaqondanga wawaphula.
- Ngubani owayezibona ngathi yikumkanikazi? Kwakutheni?
Ngumakhulu owayezibona ngathi yikumkanikazi kuba umnqwazi wakhe omtsha wawumhle kakhulu umfanela.
- Kwakutheni usisi omdala aze akhethe iikawusi ezimibala-bala?
likawusi ezimibala-bala zazihambelana nazo zonke iimpahla zakhe ngebala.
- Leliphi ibala elona lithandwayo nguThenjiwe. Utsho kuba?
Ngumbala opinki – zonke iimpahla awayezikhethile zipinki.
- Ucinga ukuba umama wayeya kumthengela zonke ezo mpahla uThenjiwe? Utsho kuba?
Vumela abafundi babelane ngeengcinga nezimvo (okunye, zonke ezi mpahla zikhangeleka zinkulu kuThenjiwe).



Vavanya ukulonwabela. Buza:

- Ulithandile na ibali? Yintoni oyithandileyo, yintoni ongayithandanga ngalo?
Vumela abafundi abambalwa babalise ngezimvo zabo.
- Wena, ukhe uye kuzithengela iimpahla? Kuyinto oyithandayo leyo?
Vumela abafundi babalise ngamava neemvakalelo zabo.
- Yeyiphi eyona venkile uyithandayo? Yintoni oyithandayo ngayo?
Vumela abafundi babalise ngezimvo zabo.

IMISEBENZI

Ukufunda okubonwayo, ukumamela nokuthetha

- Balisa ibali usebenzisa imifanekiso kuphela. Bizela abafundi ngaphambili ukuza kuchonga umntu ngamnye osemfanekisweni, umfundi abize igama lento ethengwa ngumntu lowo, ibala layo, abalise nangendlela aziva ngayo ngento leyo:

IPHEPHA	UMNTU	IMPAHLA	UMBALA	UZIVA/UZIBONA NGATHI
14	umama	isihlangu	esigolide	umdanisi
15	utata	amehlo elanga	asisipili	baculi bodumo
16	umakhulu	umnqwazi	orenji	ikumkanikazi
17	utatomkhulu	isikhafu	mhlophe namdaka	umdlali weqonga
18	usisi	iikawusi	mibala-bala	imvumi yala maxesha
19	ubhuti	ihempe	luhlaza	kukulisa ikwayala

- Ungalungisa amacwecwana ento nganye ebalulwe ngentla uyalele nabafundi babe ngamalungu amane iqela xa beyelelisa awabo amacwecwana, umzekelo:



Ukufunda kunye nezandi

- Bonisa umphandle wencwadi walathe igama leballi u-“Evenkileni yempahla” kwiphepha le-13. Nceda abafundi ukuqingqa amagama abe ngamalungu (*e-ve-nki-le-ni ... ye-mpa-hla*). Funda amagama kunye nabafundi. Qwalasela kwakhona izandi u-“nk” no-“hl”. Tsalela ingqalelo yabafundi kwisandi esitsha u-“mp”.
- Sebenzisa amacwecwana anamagama osapho amathandathu, amacwecwana anamagama empahla amathandathu namacwecwana anamagama emibala amathandathu osele uwalungisile kumsebenzi ongentla. Lungisa ngokunjalo nala alandelayo:



Yalela abafundi baziqhelanise nala magama, ngokuwafunda yonke imihla. Xhoma amagama egumbini lokufundela kwindawo ebonakalayo kubafundi, ixesha elingangeveki. Qwalasela kwakhona izandi ezisetyenziswe kula magama nesele zifundisiwe ngaphambili ezizezi: “kh, bh, hl, ng” uziqhelanise futhi nezandi ezitsha u-“mp” (impahla, ihempe) no-“nj” (i-orenji).

23 UMNQATHE OMKHULUKAZI ISISHWANKATHELO SEBALI SIKATITSHALA

Ibali yintsomi entsingiselo iseRashiya ethi “ITeniphu eNkulukazi”. Umfama uNqaba walima iitumato, iletisi, iitapile neminqathe. Zakulunga, wayivuna yonke imifuno – ngaphandle komnqathe wokugqibela. Lo mnqathe wawumkhulu kakhulu ungatsaleki. Wayesele ezame ngawo onke amandla akhe uNqaba. Wabiza unkosikazi wakhe ukuze amncede kodwa wala umnqathe ukutsaleka. Unkosikazi wabiza unyana wabo batsala kodwa abaze baphumelele. Unyana wabiza ihagu, yaze ihagu yabiza ikati. Bonke bazama futhi, kodwa wala umnqathe ukutsaleka. Ekugqibeleni ikati yabiza impuku ukuze nayo incede. Bebonke batsala kwakhona ... watsaleka umnqathe! Impuku yazincoma iqhayisa – yayiqinisekile ukuba kungenxa yamandla ayo enza ukuba umnqathe utsaleke!

PHAMBI KOKUBA KUFUNDWE

ISIGAMA

Buza imibuzo ekhokelayo ukuqinisekisa okokuba abafundi bayayilandela intsingiselo yamagama angundoqo asebalini, umzekelo: ‘Yintoni imizekelo yemifuno?’, ‘Siyivuna nini imifuno nezinye izityalo?’ (*xa zilungile zilungele ukutyiwa*), ‘Zeziphi izinto ozaziyo ezinkulu kakhulu?’. Sebenzisa imifanekiso, izilinganiso nezinye iindlela zokuchaza ukufundisa intsingiselo yamagama amatsha nangaziwayo ngabafundi. Yalela abafundi ukuba basebenzise igama ngalinye bakhe isivakalisi ngomlomo:

imifuno	vuna	umnqathe	omkhulukazi	bambelela	unyana
tsala	qjnisa	izigalo	thintitha	umbhinqo	ukuzithemba

UMHOBE

Lungisa uze nomnqathe egumbini lokufundela. Cela abafundi bacacise bachaze ngomnqathe (uorenji ngebala, uqinile, umde, utsobhile ngakumbi emazantsi, unamagqabi ngentla, njl. njl.). Fundisa abafundi lo mhobe. Abafundi bangacengceleza kunye nawe phambi kokuba nifunde ibali.

IMIBUZO

Bonisa umfanekiso oseluwqeqweni lwencwadi yebali kwiphepha lama-23. Buza:

- Ucinga ukuba ngubani le ndoda? Ucinga ukuba wenza msebenzi mni?
Ngumfama. Unxibe impahla yokusebenza nebhutsi, uxakekile uvuna iminqathe.
- Ukhangeleka eziva njani umfama? Yintoni ebangela ukuba ucinge ngolu hlobo?
Ukhangeleka edidekile – uzikrwempa intloko ngokungathi kukho ingxaki anayo.

Alatha egameni leballi uthi:

- Igama leballi lithi “Umnqathe omkhulukazi”. Ingaba uyayibona na ingxaki yomfama?
Abafundi bamele ukuqwalasela ukuba umnqathe ongekatsalwa mkhulu kakhulu kunaleyo isebhaskithini. Umfama uxakiwe ukuba uwuncothula njani na.
- Ucinga ukuba uza kuwutsala njani umnqathe umfama?
Vumela abafundi bacebise iimpendulo becombulula. Bhala iingcebiso zabafundi ebhodini. Emva kokufunda, fumana ochane impendulo.

NGEXESHA LOKUFUNDA

IMIBUZO

Nqumama kwiphepha lama-25. Khomba umfanekiso ubuze:

- Ucinga ukuba umfama uNqaba uyakuphumelela ukutsala umnqathe? Nika isizathu sempendulo yakho?
Vumela umfundi okanye ababini babalise ngezimvo zabo.

Nqumama emva kokufunda isicatshulwa esikwiphepha lama-29 ubuze:

- Ucinga ukuba kuza kwenzeka ntoni?
Vumela abafundi baqashele impendulo.

Ikhule iminqathe, ikhule

Bona imbewu yeminqathe emhlabeni
Lakavela ilanga lifudumele
Yakuna imvula imanzisa
Kuntshule amagqabi akhule
Umfama ancothule, ancothule,
Mnye, mibini, mithathu
Iminqathe mininzi, iyakusenela sonke!

Umnqathe omkhulukazi





Umfama uNqaba wayelime imifuno esitiyeni sakhe. Kumqolo wokuqala wayetyale iitumato ezibomvu. Kowesibini wayetyale iletisi eluhlaza. Kumqolo wesithathu wayetyale iitapile ezimdaka, ze kumqolo wokugqibela watyala iminqathe eorenji.

Emva kweeveki ezimbalwa yayilungile imifuno. Wavuka ekuseni ngenye intsasa umfama uNqaba, wafaka iibhutsi zakhe wangqala esitiyeni eza kuvuna imifuno.

Wavuna zonke iitumato kumqolo wokuqala. Wavuna yonke iletisi kumqolo wesibini. Wavuna zonke iitapile kumqolo wesithathu. Wavuna iminqathe kumqolo wokugqibela kodwa, hayi yonke!



Kwakulula kumfama uNqaba ukuvuna imifuno kodwa, mnqathe uthile wawubambebelele.

‘Iyho! Mkhulu lo mnqathe!’ wayecinga emangalisiwe uNqaba.

Wazama watsala uNqaba, watsala, wangaphumeleli.

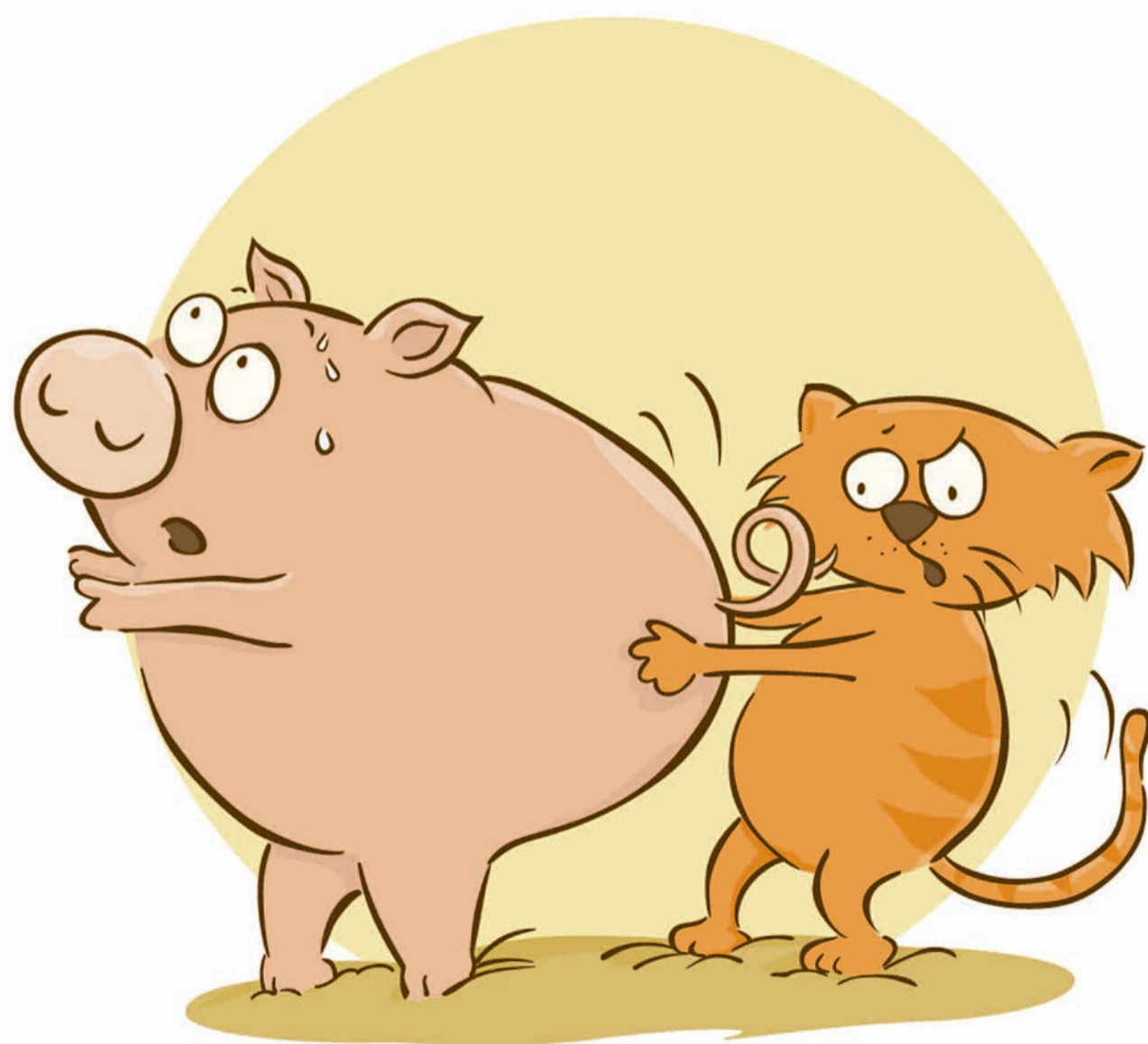
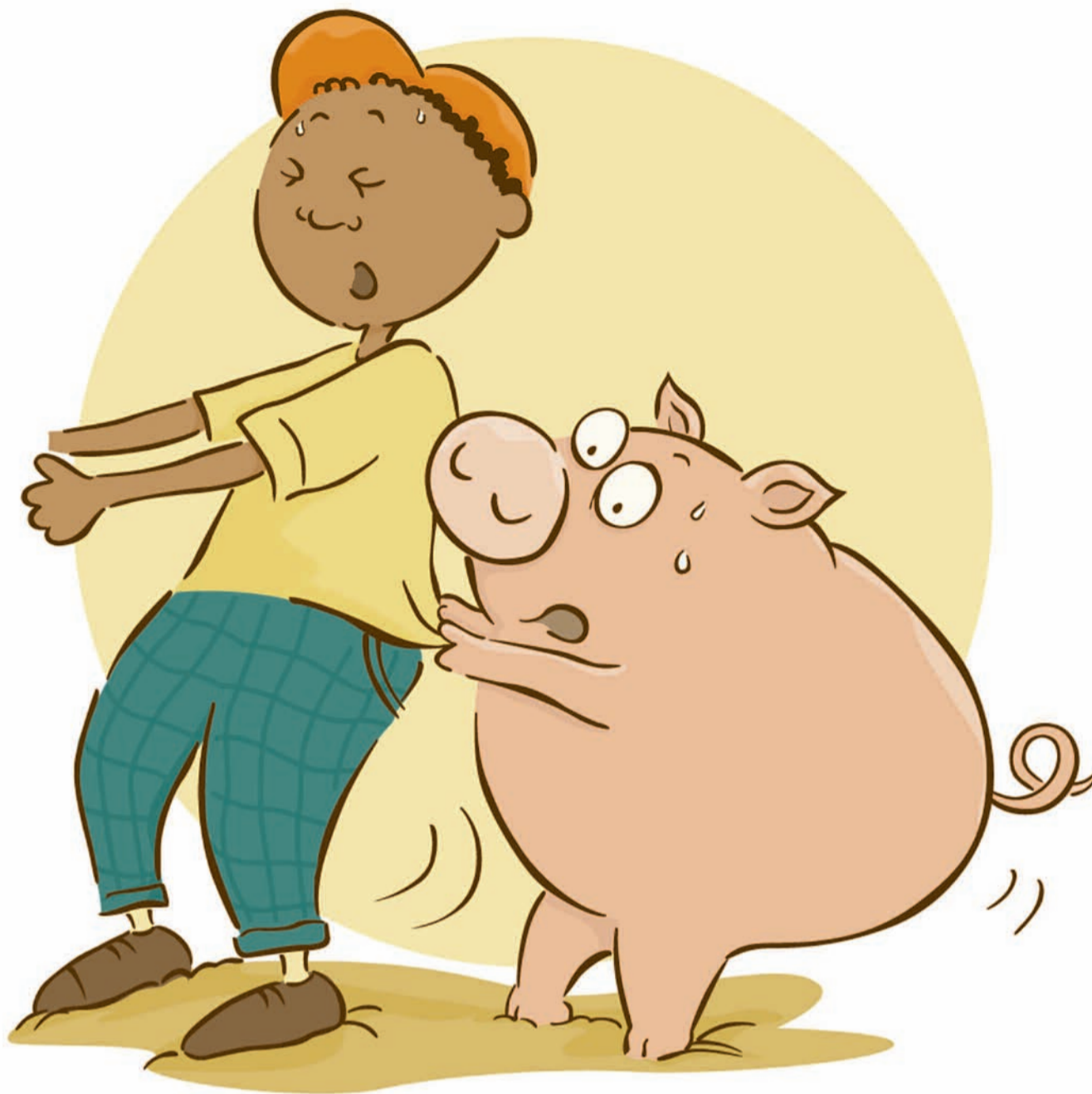
Wawumkhulu kakhulu umnqathe!

UNqaba wabiza
unkosikazi ukuze
amncede bazame
ukuwutsala umnqathe.
Unkosikazi wabambelela
kuNqaba waqinisa
esinqeni bazama
bobabini batsala.
Batsala ngawo onke
amandla ababenawo
kodwa wala umnqathe,
wala!



Unkosikazi kaNqaba
wabiza unyana wabo
ukuze bazame futhi.
Unyana wabambelela
kumbhinqo kanina
waqinisa, bobathathu
batsala. Babezame
ngawo onke amandla
ababenawo kodwa
wala umqathe, wala!

Unyana wabiza ihagu
ukuze ibancede
bazame ukutsala nayo.
Yema ngamanqina ayo
ihagu yabambelela
yaqinisa kunyana
bazama batsala. Wala
umnqathe wala!



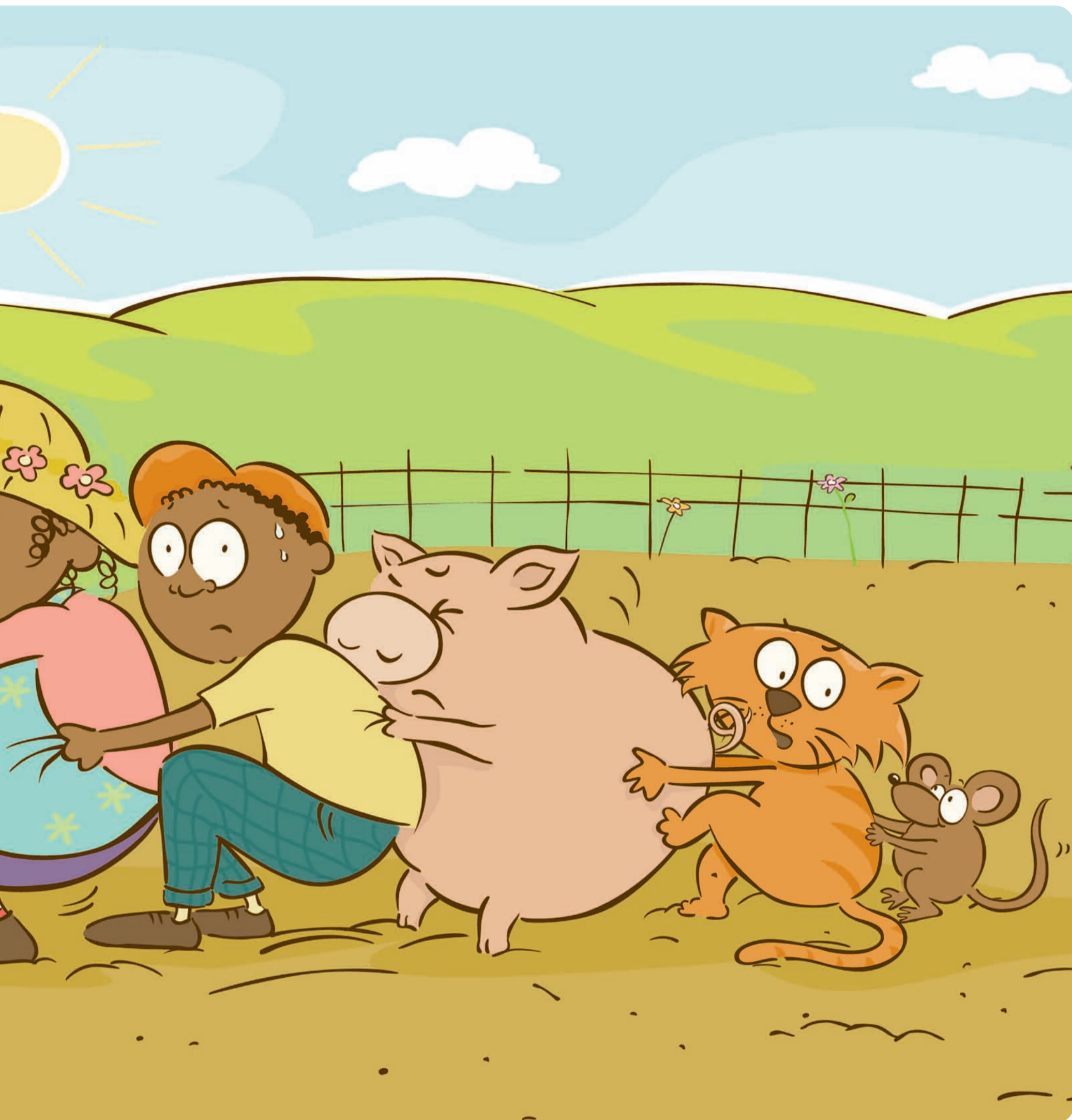
Ihagu yabiza ikati
ukuze bebonke
bazame kwakhona.
Yatsiba kwangoko
ikati yabe sele
ibambelela iqinisa
kuhagu babuya
bazama bonke
batsala. Wala
umnqathe ukutsaleka,
wala!



Yayingulomkrozo, omnye ebambelele komnye, ikati kuhagu, ihagu kunyana, unyana kunina, unina ongunkosikazi kumyeni umfama uNqaba.

Babetsale batsala kodwa umnqathe wawusabambelele emhlabeni ungatsaleki.

‘Kudala sitsala. Mkhulu kakhulu lo mnqathe!’ babediniwe bekhulaza bengazi ukuba bangawutsala njani na lo mqathe umkhulukazi.



Ikati yabiza impuku ukuba bonke babuye bazame batsale.
Yeza impuku izimisele yabambelela yaqinisa kukati.

Bonke bazama, bazama, batsala, batsaaaaa-la



WATSALEKA umnqathe!

Kwangoko yema kudana geqe impuku.
Yazithintitha izilungisa, yamisa izigalo.

‘Bizani mna nanini na! Kucacile! Nina nonke, akukho zenu!’
yatsho ngokuzithemba impuku inyatsula ibashiya.

EMVA KOKUFUNDA

IMIBUZO

Vavanya ulwazi. Buza:

- Wayelime ntoni umfama uNqaba?
Wayelime imifuno – iitumato, iletisi, iitapile neminqathe.
- Waxakwa yintoni umfama uNqaba ukutsala umnqathe wokugqibela?
Wawumkhulu kakhulu.
- Ngubani owanceda umfama uNqaba ukutsala umnqathe?
Unkosikazi wakhe, unyana wabo, ihagu, ikati nempuku, bonke banceda.
- Ucinga ukuba amandla empuku sesona sizathu sokuba umnqathe utsaleke?
Mhlawumbi, kodwa incinci kakhulu impuku! Mhlawumbi kwakudingeka ukuba babuye batsale okokugqibela, nokuba impuku yayincedisa nokuba yayingancedisi. Vumela abafundi baxoxe ngalo mba!

Vavanya ukulonwabela. Buza:

- Ulithandile na ibali? Yintoni oyithandileyo, yintoni ongayithandanga ngalo?
Vumela abafundi abambalwa babalise ngezimvo zabo.
- Wena, wakhe wayilima eyakho imifuno? Balisa.
Vumela abafundi babalise ngamava abo. Bhala uluhlu lwemifuno ebhodini.
- Ukuba ubungalima imifuno, yeyiphi obungayityala?
Fumanisa ngeyona mifuno ithandwayo ngabafundi ngokwenza uvavanyo lweempendulo kubafundi egumbini.

IMISEBENZI

Ukufunda okubonwayo, ukumamela nokuthetha

- Balisa ibali usebenzisa imifanekiso kuphela. Bizela abafundi abasibhozo ngaphambili ukuza kubalisa ibali kwakhona, umfundi abemnye ngexesha, echaza okwenzekayo kumfanekiso ngamnye. Abafundi kumele ukuba sele bebazi abalinganiswa: umfama uNqaba, unkosikazi wakhe, unyana wabo, ihagu, ikati, impuku.
- Ukuba kuyenzeka, lungisa amacwecwe amathandathu anemifanekiso yabalinganiswa abasebalini, umlinganiswa negama icwecwe necwecwe. Bhidanisa amacwecwe. Biza abafundi abathandathu ukuza kulungisa amacwecwe bawabeke ngokulandelelana kwawo nachanekileyo. Umfundi nomfundi uyakusebenzisa icwecwe lomlinganiswa wecwecwe lakhe ukubalisa ibali kwakhona ngokulandelelana kwawo nachanekileyo:



umfama uNqaba



unkosikazi



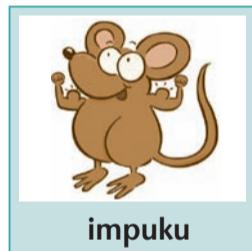
unyana



ihagu



ikati



impuku

Umfama uNqaba wayengakwazi ukutsala umnqathe omkhulukazi. Wabiza unkosikazi wakhe ukuze ancede kodwa wala umnqathe ukutsaleka. Unkosikazi wabiza unyana wabo ukuze ancede kodwa wala umnqathe ukutsaleka. Unyana wabiza ihagu ukuze incede kodwa wala umnqathe ukutsaleka. Ihagu yabiza ikati ukuze incede kodwa wala umnqathe ukutsaleka. Ikati yabiza impuku ukuze incede. Bebonke batsala, de ekugqibeleni watsaleka umnqathe!

Ukufunda kunye nezandi

- Alatha igama leballi u-“Umnqathe omkhulukazi” kwiphepha lama-23. Nceda abafundi ukuqingqa amagama abe ngamalungu (*u-m-nqa-the ... o-m-khu-lu-ka-zi*). Funda amagama kunye nabafundi. Tsalela ingqalelo yabafundi kwisandi esitsha u-“nq”, uqwalasele kwakhona isandi u-“kh”.
- Sebenzisa amacwecwana abalinganiswa bebali asele elungisiwe, ulungise nala alandelayo amacwecwana:

umnqathe

omkhulukazi

yatsho

tsala

bambelela

Yalela abafundi baziqhelanise nala magama, ngokuwafunda yonke imihla. Xhoma amagama egumbini lokufundela kwindawo ebonakalayo kubafundi, ixesha elingangeveki.



UBUSAZI?

Umnqathe ongowona **mde** emhlabeni wasondela **kwiimeta ezintandathu** umlinganiselo!
Umnqathe ongowona wakhe waba **mkhulu** waweyisha **ubunzima** obungaphezu **kwesi-8.5 iikilogram!**

24 IBALI LOBUGQI ISISHWANKATHELO SEBALI SIKATITSHALA

Umgawuli ufumana umthi wobugqi ehlathini. Umthi umvuza ngobugqi kathathu iminqweno yakhe ukuba uthwawusindisa ukuwugawula. Umgawuli uyavuma. Akufika ekhaya umgawuli uncokolela unkosikazi wakhe ngokwenzekileyo. Unkosikazi ucebisa ukuba bacingisise ngezinto amabazinqwenele. Besitya isidlo sangokuhlwa, umgawuli engaqaphelanga, unqwenela isoseji enkulu enomhluzi. Unkosikazi esisibhovubhovu ngumsindo – wenza eyona ngxolo ubiza umgawuli isidenge. Umgawuli naye enele yingxolo, ecaphukile ukubizwa isidenge, unqwenela ukuba lo soseji ingathi nca ebusweni bukankosikazi! Bobabini baphazamisekile ... kusele ithuba nje linye lobugqi ukunqwenela! Umgawuli ecacelwe – unqwenela ukuba isoseji ibuyele etafileni. Liphela kamnandi kanjalo ke ibali, kumnandi umgawuli nowakwakhe bonwabile besitya isoseji emnandi kakhulu!

PHAMBI KOKUBA KUFUNDWE

ISIGAMA

Buza imibuzo ekhokelayo ukuqinisekisa okokuba abafundi bayayilandela intsingiselo yamagama angundoqo asebalini, umzekelo: 'Wenza msebenzi mni umgawuli?', 'Ithetha ukuthini ukuthi into ibubugqi?', 'Ukuba ungaze unqwenela into, unganqwenela ntoni?' njl. njl. Sebenzisa imifanekiso, izilinganiso nezinye iindlela zokuchaza ukufundisa intsingiselo yamagama amatsha nangaziwayo ngabafundi. Yalela abafundi ukuba basebenzise igama ngalinye bakhe isivakalisi ngomlomo:

umgawuli	ubugqi	umnqweno	silumke singlarhali	udodorhoyi	irhewu
rhashaza	sindisa	umhluzi	umsindo	xhuma	ngokuhlwa

Fumanisa ukuba abafundi kukhona mabali bawaziyo na abalisa ngobugqi. Vumela abafundi babalise abafundi egumbini liphela ngezehlo okanye iziganeko zobugqi ezenzeka ebalini abalaziyo.

UMHOBE

Fundisa abafundi lo mhobe ungokubala. Abafundi babala ukuqala ekugqibeleni kwi-10 ngambini. Abafundi bangacengceleza umhobe kunye nawe phambi kokuba nifunde ibali.

IMIBUZO

Bonisa umfanekiso oseluwqeqweni lwencwadi yebali kwiphepha lama-33. Buza:

- Yintoni esebusweni bukankosikazi?
Yisoseji enkulu
- Wenza ntoni unkosikazi?
Ukhangeleka ngathi uzama ukususa isoseji ebusweni bakhe.
- Uziva njani unkosikazi? Kutheni ucinga ngolu hlobo?
Ukhangeleka ngathi uyoyika – ingathi isoseji ithe nca ayisuki.

Alatha, ke ngoku, egameni leballi uthi:

- Igama leballi lithi "Ibali lobugqi". Ucinga ukuba kwenzeka ubugqi obunjani?
Ubugqi obuthile benze isoseji ithi nca ebusweni bukankosikazi.
- Ucinga ukuba iye kufika njani isoseji ebusweni bukankosikazi?
Vumela abafundi babalise ngeengcinga nangemifanekiso ngqondweni abanayo.

NGEXESHA LOKUFUNDA

IMIBUZO

Gqiba ukufunda iphepha ngalinye phambi kokuba ubonise abafundi umfanekiso.

Nqumama emva kokufunda isicatshulwa esikwiphepha lama-34. Bonisa umfanekiso ubuze:

- Yintoni ekuxelela ukuba ngumthi wobugqi lo?
Unobuso, kunazo nezangqa ezibujikelezileyo.

Nqumama emva kokufunda isicatshulwa esikwiphepha lama-36. Bonisa umfanekiso ubuze:

- Kwenzeke ntoni?
Umgawuli usebenzise omnye weminqweno yakhe ukunqwenela isoseji.

Nqumama emva kokufunda isicatshulwa esikwiphepha lama-38 ubuze:

- Ucinga ukuba bangayisusa njani isoseji empumlweni kankosikazi?
Kuyakufuneka ukuba umgawuli asebenzise umnqweno wakhe wesithathu.

Iisoseji ezilishumi ezityebileyo

Iisoseji **ezilishumi** ezityebileyo ziqhotsiwe epanini Enye yaQHASHUMBA! Enye yathi GQUM!

Iisoseji **ezisibhozo** ezityebileyo ziqhotsiwe epanini Enye yaQHASHUMBA! Enye yathi GQUM!

Iisoseji **ezintandathu** ezityebileyo ziqhotsiwe epanini Enye yaQHASHUMBA! Enye yathi GQUM!

Iisoseji **ezine** ezityebileyo ziqhotsiwe epanini Enye yaQHASHUMBA! Enye yathi GQUM!

Iisoseji **ezimbini** ezityebileyo ziqhotsiwe epanini Enye yaQHASHUMBA! Enye yathi GQUM!

Ziqhotswe zonke iisoseji ezityebileyo epanini!

Ibali lobugqi





Umgawuli nonkosikazi babehlala bobabini ekhayeni labo kufutshane nehlati.

Mgqibelo uthile, umgawuli esebenza ehlatini, wabona umthi obukekayo wagqiba ekubeni awugawule. Ephakamisa izembe eza kugawula, weva ingxolo yamagqabi erhashaza. Esamamele oko kurhashaza, wathetha umthi urhoxoza wathi, 'Yima! Sukugawula!'

'Ungubani wena?' wabuza umgawuli othukile.

'Ndingumthi wobugqi. Ndakukuvuza ngobugqi kathathu iminqweno yakho ukuba undisindisile!' laphendula ilizwi.

Emangalisiwe umgawuli, wavuma wemka esiya kufuna umthi angawugawula.



Ngokuhlwa kwaloo mini wafika ekhaya umgawuli wabalisa ngomthi wobugqi kunkosikazi. Lamvuyisa gqitha eli bali unkosikazi. Wanqumama ukupheka ezele yimincili nolonwabo.

‘Ubugqi kathathu? Kufuneka ibe zezona zinto sizidingayo iminqweno yethu. Kufuneka ke futhi silumke singarhali,’ wacebisa watsho unkosikazi.



Isidlo sangokuhlwa sasilungile. Ngobubele wabeka udodorhoji nerhewu phambi komyeni wakhe etafileni unkosikazi.

‘Mh-h-h-h, udodorhoji! Ukuba nje bekunesoseji enkulu enomhluzi ...’ walangazelela umgawuli ebulela.

Zange aligqibe umgawuli. Isoseji enomhluzi erhalelekayo nelangazeleleka kunene yayiseyithe thaca etafileni.



Umgawuli wothuka waxakeka akubona le soseji. Unkosikazi yena wasuka waba nologyiko.

‘Owu, ungathini? Ukurhala ke kona! Esi sidenge sendoda! Ubugqi bokuqala bumkile!’ yayinomsindo kakhulu inkosikazi.

‘Yeka ufundekela! Thula!’ watsho evale iindlebe engakwazi ukumelana naloo ngxolo umgawuli. Wade waqalekisa umgawuli kuba wayengayeki ukuthetha unkosikazi, ‘Inga le soseji ingakobo buso bakho!’

Zange aligqibe umgawuli. Isoseji yayikubuso benkosikazi, ibhabhile ukusuka etafileni.



‘Uyabona ke ngoku! Susa le soseji kobu buso!’ watsho efuna ukukhala unkosikazi.

Waphakama umgawuli bazama ukuyisusa isoseji beyisika ngemela kodwa yala ukusuka. Kwamela leyo babeyisika ngayo yayisuke ixhume ingasiki.

Umgawuli wagqiba ekubeni abize ugqirha.

‘Hayi, hayi! Akunamntu makandibone ndinje. Andifuni gqirha! Andifuni abone le soseji ejinga kobu buso bam!’ walila egquma ubuso unkosikazi. ‘Ulahle imivuzo emibini yobugqi. Jonga nje nendlela ondenze mbi ngayo. Ndiza kuthini ngoku?’ watsho ekhathazekile unkosikazi.



Umgawuli wacinga ngalo mvuzo mnye wobugqi wawusele. Wayecinga nangazo zonke izinto awayengazinqwenela. Wajonga unkosikazi ngosizi ebona lo soseji inkulu ebusweni bakhe. Yayinye nje into engumnqweno engqondweni yakhe.

‘Lithuba lokugqibela lobugqi! Ndifuna le soseji ibuyele etafileni ...’
wanqwena ngokuthe cwaka.

Zange aligqibe umgawuli. Ngoko nangoko isoseji enkulu yayiseyithe thaca etafileni, ibhabhile ukusuka kubuso benkosikazi.



Ngokuhlwa kwaloo mini, baba nesidlo esimnandi kakhulu umgawuli nenkosikazi yakhe. Babelana ngododorhoji, irhewu nesoseji enkulu enomhluzi, emnandi kunene.

EMVA KOKUFUNDA

IMIBUZO

Vavanya ulwazi. Buza:

- Umthi wobugqi wawumthembise ngasigqibo sithini umgawuli?
Umgawuli wayeza kuvuzwa kathathu iminqweno yakhe ukuwusindisa angawugawuli umthi.
- Yintoni eyenza inkosikazi yomgawuli ibe nomsindo?
Kungokuba umgawuli wayelahle umnqweno wokuqala ngokunqwenela isoseji.
- Yintoni eyenza umgawuli abe nomsindo?
Kungokuba inkosikazi yakhe yayisenza ingxolo imcaphukisa isithi usisidenge.
- Yayiyintoni umnqweno womgawuli wesibini?
Wanqwenela ukuba isoseji enkulu enomhluzi ithi nca ebusweni benkosikazi yakhe.
- Kwakutheni umgawuli aze asebenzise umnqweno wesithathu ukususa isoseji ebusweni benkosikazi yakhe?
Kwakungakhathaliseki ukuba babengaba nemali kangakanani na, wayengenamnqweno wokuba inkosikazi yakhe iphile ngolo hlobo.
- Ucinga ukuba umgawuli nenkosikazi yakhe baziva njani ekupheleni kwebali?
Bobabini babekhululekile kukuphela kwalo mdlalo weminqweno – babonwabile kananjalo ukwabelana ngalo soseji imnandi inkulu inomhluzi!

Vavanya ukulonwabela. Buza:

- Ulithandile na ibali? Yintoni oyithandileyo, yintoni ongayithandanga ngalo?
Vumela abafundi abambalwa babalise ngezimvo zabo.
- Wena, wakhe wanqwenela nto ungumntu nje? Yayiyintoni? Waphumelela ke umnqweno wakho?
Vumela abafundi babalise ngamava abo. Bhala uluhlu lweminqweno ebhodini.

IMISEBENZI

Ukufunda okubonwayo, ukumamela nokuthetha

- Balisa ibali usebenzisa imifanekiso kuphela. Cela abafundi abahlukeneyo baze ngaphambili ukuza kuchaza ngeemvakalelo zomgawuli nonkosikazi wakhe kumfanekiso ngamnye:

IPHEPHA	UMGAWULI	UNKOSIKAZI
35	bonwabile, bayavuya	
36	bamangalisiwe, bothukile	
37	bothukile	bayoyika
38	badanile bakhathazekile	
39	babhidekile	baphazamisekile
40	bonwabile	

- Tyhila kumfanekiso kwiphepha lama-35. Cela abafundi baqwalasele bachaze iingcinga ezingumnqweno osengqondweni yenkosikazi yomgawuli. Tyhila kwakhona kumfanekiso kwiphepha lama-39. Cela abafundi baqwalasele bachaze iingcinga ezingumnqweno ongomnye osengqondweni yomgawuli.

Ukufunda kunye nezandi

- Alatha igama lebali u-“Ibali lobugqi” kwiphepha lama-33. Nceda abafundi ukuqingqa amagama (*i-ba-li ... lo-bu-gqi*) abe ngamalungu. Tsalela ingqalelo yabafundi kwisandi esitsha u-“gq”.
- Lungisa la magama abhalwe kumacwecwana:

ibali	ubugqi	umgawuli	isoseji	udodorhoji	irhewu
-------	--------	----------	---------	------------	--------

Yalela abafundi baziqhelanise nala magama, ngokuwafunda yonke imihla. Xhoma amagama egumbini lokufundela kwindawo ebonakalayo kubafundi, ixesha elingangeveki.

Incwadi enkulu 6

I-*Vula Bula* yinkqubo yobuchule bokufunda nokubhala nengundoqo eveliswe yashicilelwa ngabakwa-Molteno Institute for Language and Literacy.

I-*Vula Bula* iyinkqubo eyodwa kuba iveliswe kwisiseko solwimi ngalunye kwiilwimi zeemvelo zoMzantsi Afrika. Inkqubo iyilwe ngononophelo, ivumelana ingqinelana kananjalo nokukhula kolwimi endalweni kwakunye neemfuneko ezingundoqo zobuchule bokufunda nokubhala ulwimi.



UMGANGATHO woku-1

INCWADI ENKULU 1

1. Bala
2. Hayi
3. Vula vala
4. Coca

INCWADI ENKULU 2

5. Baleka
6. Lala
7. Zoba usike
8. Mamela

INCWADI ENKULU 3

9. Jika
10. Umnikelo
11. Utata usele nosana
12. Sebeza

INCWADI ENKULU 4

13. Lelikabani eli vili?
14. Ekhaya
15. Uhambo
16. Yophukile ifestile

INCWADI ENKULU 5

17. Ncedani!
18. Uphi uZinzi?
19. Sidlala undize
20. Sityiwe isonka

INCWADI ENKULU 6

21. Izinyo
22. Evenkileni yempahla
23. Umnqathe omkhulukazi
24. Ibali lobugqi

INCWADI ENKULU 7

25. Gcinela ingomso
26. Isuphu yelitye
27. Idabi lomoya nelanga
28. Umvundla nofudo

INCWADI ENKULU 8

29. Ingonyama nempuku
30. Ukubhaka nomakhulu
31. Edolophini
32. UMzantsi Afrika ngowethu

Ibali ngalinye liqhagamshelana nencwadana yebanga egama lifanayo. Imizekeliso emibala emihle nezicatshulwa ezonwabisayo ziyasebenzisana ukukhuthaza abantwana ukuthanda ukumamela amabali nokufunda. Iingxoxo ezijikeleze imizekeliso zivelisa zikhulise ubuchule bokufunda nokubhala beembono zabantwana zikhuthaze kananjalo ukuzithemba ekusebenziseni isigama esithethwayo ngendlela ecacileyo nephuhlileyo. Imibuzo esele isezingqondweni nevulelekileyo entsingiselo isebalini, ikhulisa ubuchule bokucinga ngendlela ekhwencayo nenesiphiwo sokuyila.

ISIXHOSA