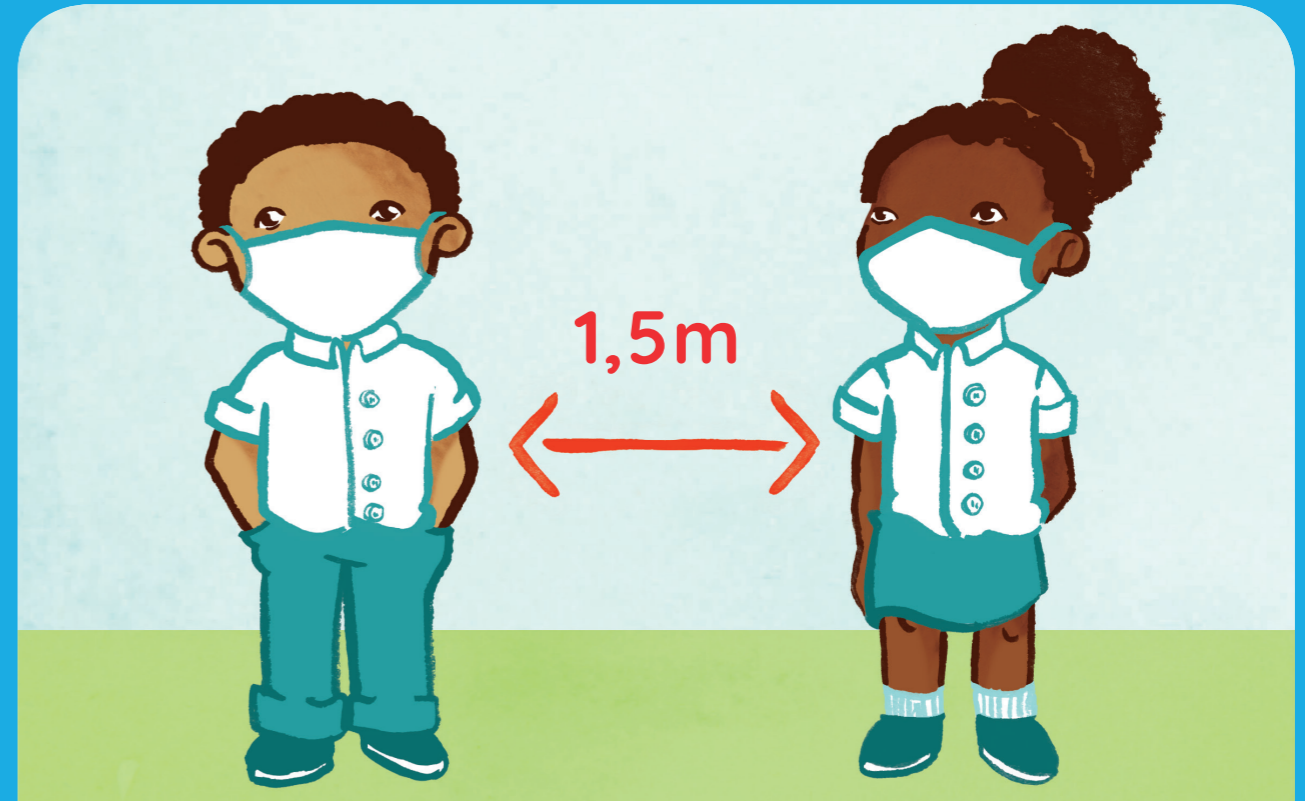


Itshireletse ho COVID-19



Hlatswa matsoho a hao
kgafetsa ka sesepa le metsi



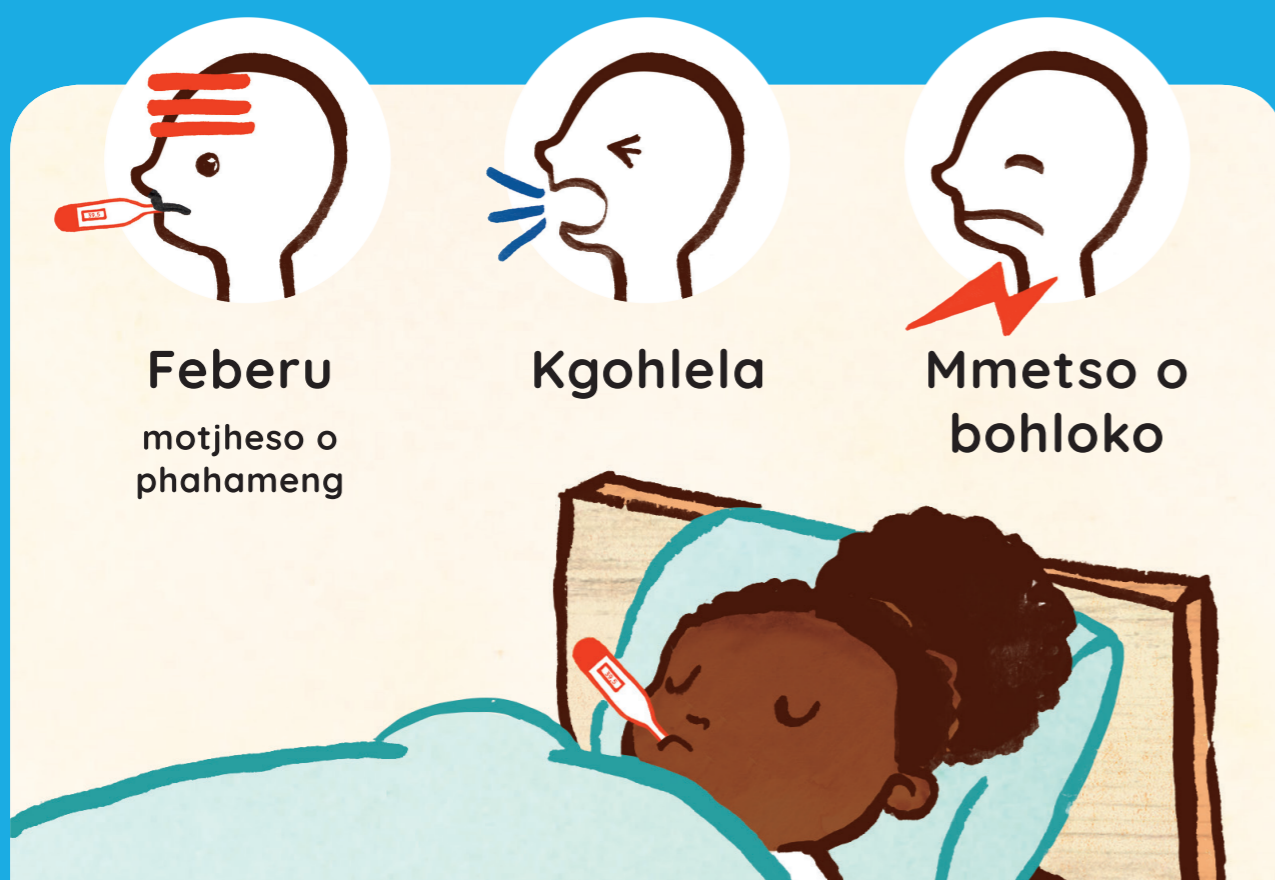
Boloka sebaka sa 1,5 mithara
dipakeng tsa hao le batho ba bang



Rwala maske ya hao kamehla



O se ke wa tshwara sefahleho
sa hao

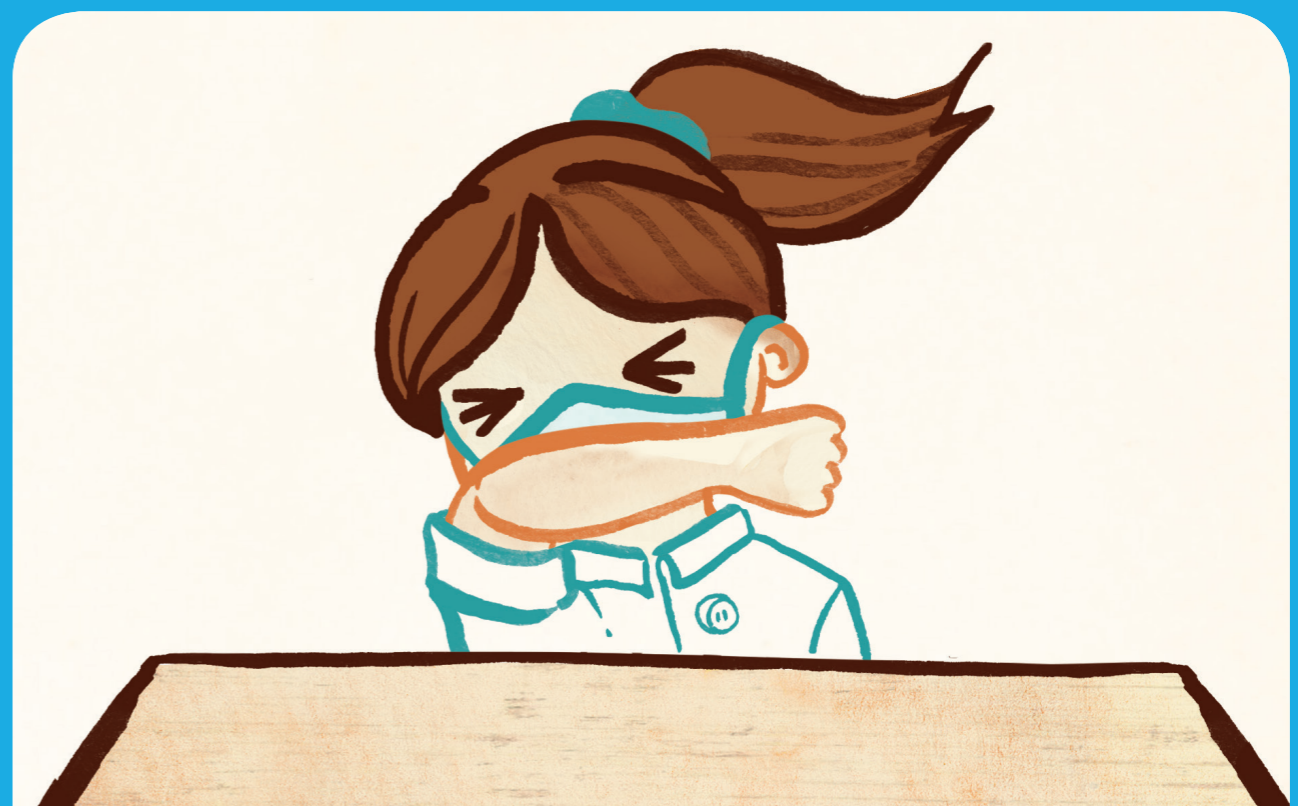


Feberu
motjheso o
phahameng

Kgohlela

Mmetso o
bohloko

Haeba o kula, dula hae



Ha o kgohlela, kgohlella
setsweng sa hao



Funda Wandu

Reading for Meaning